

Contact Us

Froedtert & the Medical
College of Wisconsin
9200 W. Wisconsin Ave.
Milwaukee, WI 53226
414-805-3666 | froedtert.com

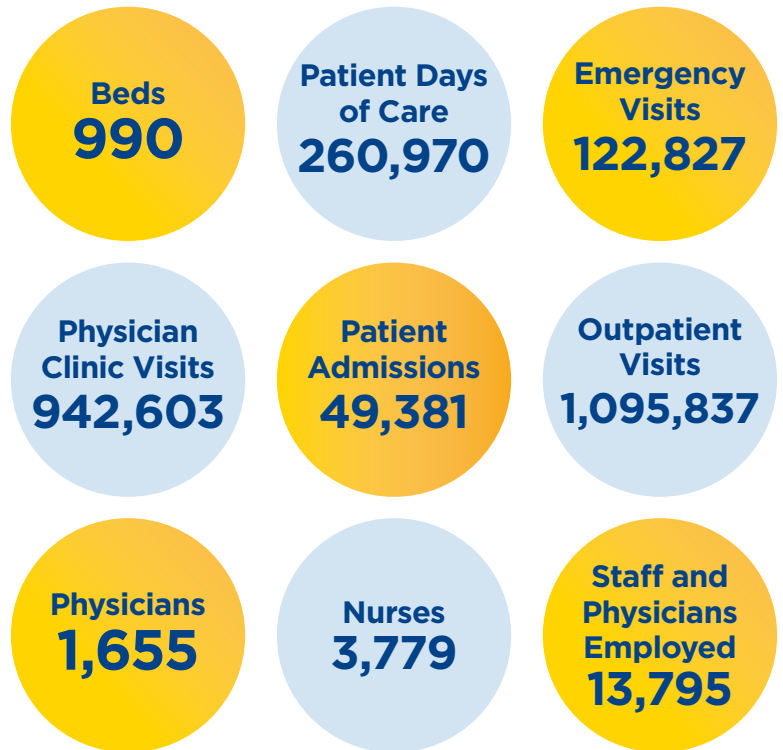


Who We Are

Froedtert Health is a Milwaukee-based integrated health care system providing a variety of health-related services including hospitals and health centers, home care, laboratory, health insurance, employer health services and workplace clinics, and digital health solutions.

Vital Statistics

As of June 30, 2021



Vision

We will be the trusted leader by transforming health care and connecting communities to the best of academic medicine.

Mission

We advance the health of the people of the diverse communities we serve through exceptional care enhanced by innovation and discovery.

Values

Value People. We treat others with respect, knowing that their feelings, thoughts and experiences are as important as our own.

Work Together. We collaborate across the enterprise to put forward our best.

Act Now. We take action to solve problems and move forward quickly.

Own It. We take full accountability for our decisions, actions and results.

Break Through. We change the future of care with creativity and innovation.

Deliver Excellence. We set the standard that others aspire to by always asking “What more can we do?”

| | |
|-----------------------|--------|
| Average Daily Census | 736 |
| Cardiology Encounters | 87,120 |
| Volunteers | 391 |
| Births | 4,477 |
| Intensive Care Units | |
| # of Units | 8 |
| # of Beds | 139 |

About the Froedtert & the Medical College of Wisconsin Health Network

The Froedtert & the Medical College of Wisconsin regional



health network is a partnership between Froedtert Health and the Medical College of Wisconsin supporting a shared mission of patient care, innovation, medical research and education. Our health network operates eastern Wisconsin's only academic medical center and adult Level I Trauma Center at Froedtert Hospital, Milwaukee, an internationally recognized training and research center engaged in thousands of clinical trials and studies. The Froedtert & MCW health network, which includes eight hospital locations, more than 2,000 physicians and more than 45 health centers and clinics, draws patients from throughout the Midwest and the nation. In our most recent fiscal year, outpatient visits were nearly 1.5 million, inpatient admissions to our hospitals were 55,085 and visits to our network physicians exceeded 1.1 million.

In addition to Froedtert Hospital, the network includes Froedtert Menomonee Falls Hospital, Froedtert West Bend Hospital and Froedtert Community Hospital with locations in New Berlin and Pewaukee. The health network represents the collaboration of Wisconsin's largest multispecialty physician practice with two community-based physician groups. In October 2017, an existing affiliation with the former United Hospital System was expanded to include its Kenosha Medical Center, St. Catherine's Medical Center and related clinics in the network. In March 2021, the health network expanded again and now includes Holy Family Memorial, Manitowoc County's largest health care provider. For more information, visit froedtert.com.

Top 10 Diversity Action Award Winner

Froedtert Health ranks third on the Association of ERGs and Councils' 2021 Diversity Impact Awards™ list of "Top 10 Diversity Action Award" winners. We were honored for our Diversity Council's rapid response to the COVID-19 pandemic, the pandemic's economic impact and community unrest.



Top Cancer Program

The Froedtert & MCW Cancer Network is a 2020 Press Ganey Guardian of Excellence Award® winner. This award honors organizations that have reached the 95th percentile for patient experience, engagement or clinical quality performance.



Top Performer in LGBTQ Healthcare Equality

The Human Rights Campaign Foundation recognized Froedtert Hospital, Froedtert Menomonee Falls Hospital and Froedtert West Bend Hospital as 2020 "Top Performers in LGBTQ Healthcare Equality" for protecting our LGBTQ patients and employees from discrimination, ensuring equal visitation for LGBTQ people and providing staff training in LGBTQ patient-centered care.



Best Place to Work for Disability Inclusion

Froedtert Health was named a Best Place to Work for Disability Inclusion, earning a top score on the 2021 Disability Equality Index® (DEI) for outstanding commitment to disability inclusion practices. The DEI assessment measures an organization's culture and leadership, accessibility, employment practices (including benefits, education and accommodations), community engagement and supplier diversity.



For more information, visit froedtert.com/quality/awards.