

Directions to:

Froedtert & the Medical College of Wisconsin
Community Memorial Hospital - Admitting

Located at: W180 N8085 Town Hall Road
Menomonee Falls, WI 53051

From Fond du Lac:

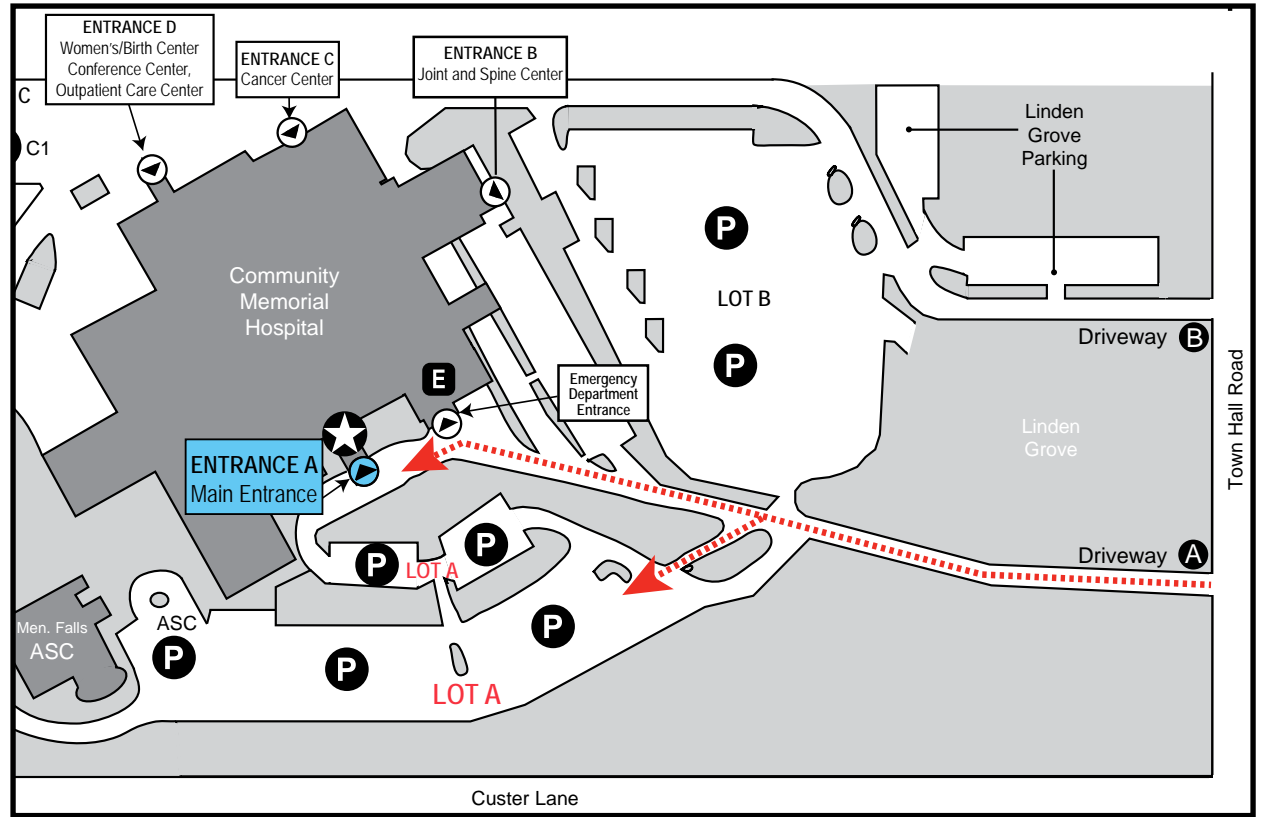
- Take US-41 S which will turn into US-45 S.
- Exit west on Main Street/Hwy 74 (exit 50).
- Turn left onto Town Hall Road.
- Community Memorial Hospital will be on your right. Enter the hospital campus via Driveway A.

From Racine/Kenosha/Milwaukee:

- Head north on I-94 W, take the I-43 S/I-894 bypass (exit 316 to Madison/Fond du Lac).
- Continue on I-894 W, which will turn into US-45 N. Exit to Appleton Avenue N (exit 47A). Turn left on Good Hope/County Road W.
- Turn right onto Town Hall Road.
- Community Memorial Hospital will be on your left. Enter the hospital campus via Driveway A.

From Madison:

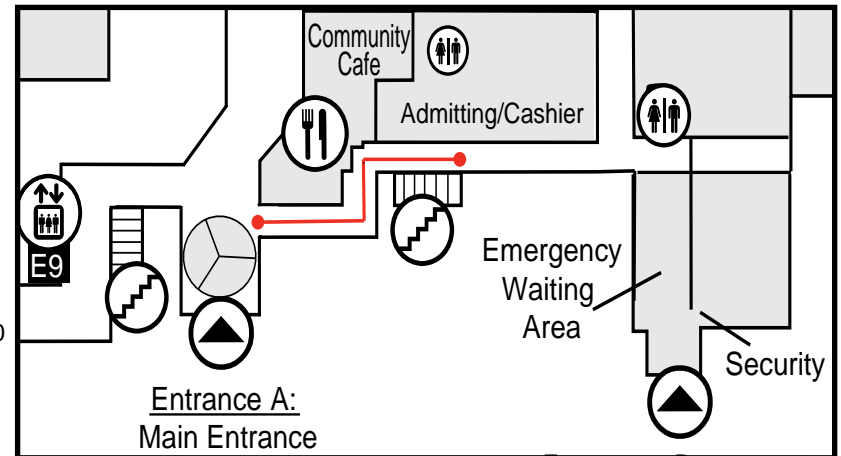
- Take I-94 E toward Milwaukee and take exit 305B on the left to merge onto US-45 N toward Fond du Lac.
- Exit to Appleton Avenue N (exit 47A). Turn left on Good Hope/County Road W.
- Turn right onto Town Hall Road.
- Community Memorial Hospital will be on your left. Enter the hospital campus via Driveway A.



Upon reaching the hospital campus:

1. From Town Hall Road, enter Driveway A.
2. Turn into Parking Lot A.
3. Enter the hospital through the main entrance, Entrance A.
4. Upon entering the hospital, turn **RIGHT** and follow signs to Admitting.

**Patient drop-off and valet services are available at Entrance A.*



*please note, this map is not to scale

Questions? Call 262-251-1000 or visit froedtert.com, for appointments call 1-800-DOCTORS.