

What is a Community Health Needs Assessment (CHNA)? A CHNA is a tool to identify significant community health needs and issues through a robust data collection and analysis process.

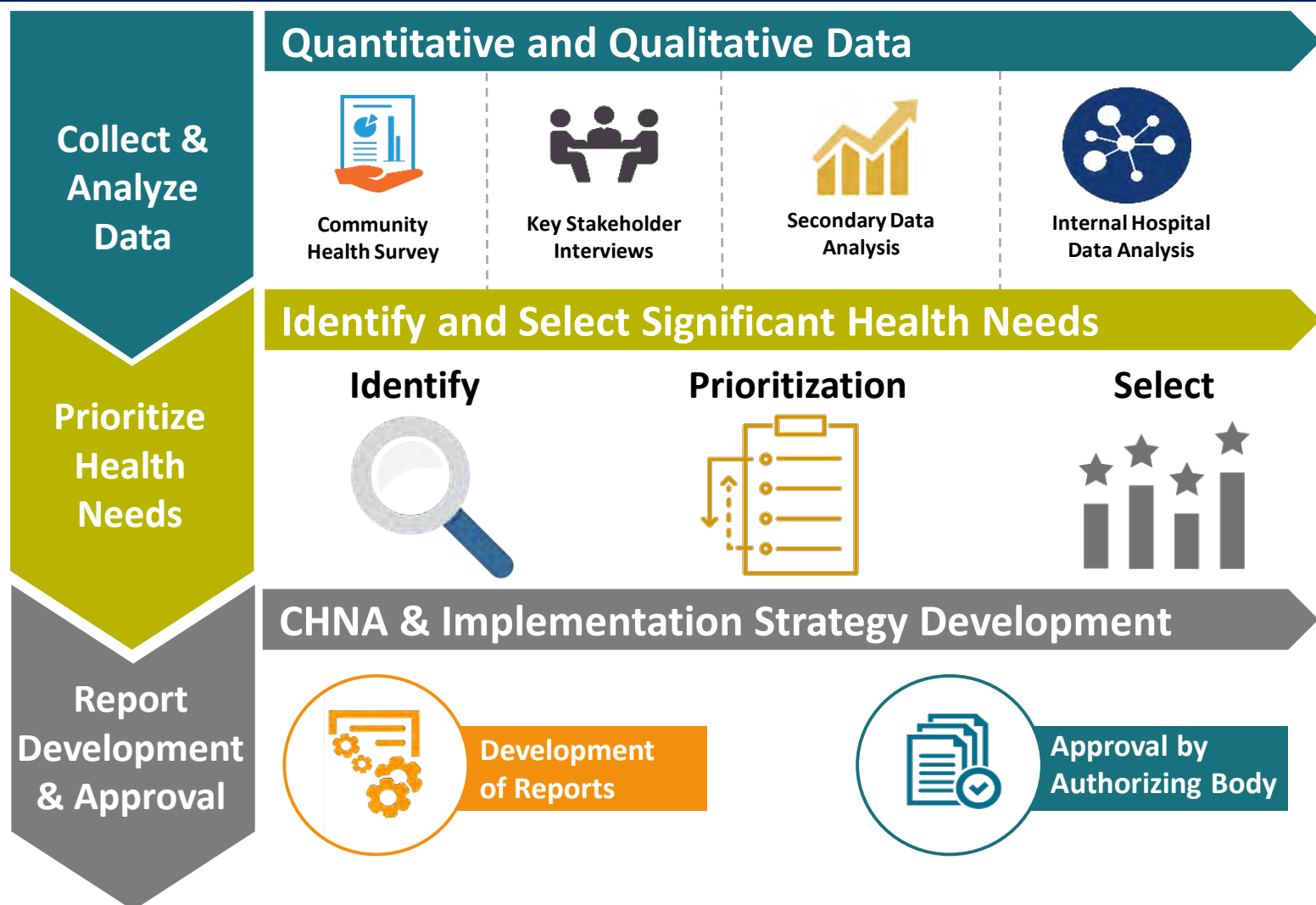
### CHNA IRS Regulations

- Section 501(r)(3)(A) requires a hospital organization to conduct a CHNA every three years and to adopt an implementation strategy to meet the community health needs identified through the CHNA.
- The CHNA must:
  - Define the community served
  - Assess community health needs
  - Include input representing the board interests of the community
  - Prioritize significant health needs
  - Identify resources
  - Evaluate impact from previous CHNA
  - Be adopted by an authorizing body

### Froedtert Health CHNA Network

- Froedtert Hospital
- Froedtert Bluemound Rehabilitation Hospital
- Froedtert Menomonee Falls Hospital
- Froedtert West Bend Hospital
- Holy Family Memorial
- Froedtert Community Hospital-Pewaukee
- Froedtert Community Hospital-New Berlin
- Froedtert Community Hospital-Mequon
- Froedtert Community Hospital-Oak Creek

## Community Health Needs Assessment Process



# Aligned CHNA Significant Health Needs Across the Network

Health is shaped by four domains- (1) health behaviors, (2) clinical care, (3) social and economic factors, and (4) physical environment- all of which have complex interrelationships.

Many community health needs are identified through the CHNAs comprehensive data collection process. The most common health issues/behaviors, social determinants of health and priority populations identified across the health network include:

- **Health Issues/Behaviors**
  - Obesity
  - Nutrition
  - Physical activity
  - Chronic diseases
  - Infectious disease (COVID-19)
  - Mental health\*
  - Substance use\*
- **Social Determinants of Health**
  - Equitable access to care
  - Accessible & affordable housing\*
  - Transportation\*
  - Food insecurity\*
  - Racism/inclusion\*
- **Priority Populations**
  - Elderly/older adults
  - Hispanic/Latinx
  - Youth\*
  - Low socioeconomic status
  - Uninsured/underinsured
  - Black/African American

Froedtert Health Community Engagement staff, leaders and external community partners work collaboratively to address the significant health needs of the community by leveraging existing resources including in-kind donations, financial contributions, dedicated staff, marketing/IT, and clinical and medical expertise. Some examples of these include:

- **Community Investments**
  - Grants and sponsorships
  - Froedtert in Action
  - Strategic partnerships
  - Coalition/committee participation

*\*Froedtert Health relies on community partnerships to address this health need or priority population.*

The CHNA significant health needs are identified based on their significance, prevalence, alignment with Froedtert Health's strategic priorities, community partnerships and the feasibility to address based on current resources. The aligned CHNA significant health needs across the health network include:



Behavioral Health



Equitable Access to Health Care



Chronic Disease Prevention



Workforce Development

## Unique CHNA Significant Health Needs Across the Network

Many community health needs are identified through the comprehensive data collection process. The most unique health issues/behaviors, social determinants of health and priority populations across the health network include:

- **Health Issues/Behaviors**
  - Maternal & Child Health
- **Social Determinants of Health**
  - Violence\*
- **Priority Populations**
  - Rural vs Urban

The CHNA significant health needs are identified based on their significance, prevalence, alignment with Froedtert Health's strategic priorities, community partnerships and the feasibility to address based on current resources. The unique CHNA significant health needs across the health network include:



Violence Prevention



Infectious Disease



Social Determinants of Health

*\*Froedtert Health relies on community partnerships to address this health need or priority population.*