

Secondary Data Report

A summary of secondary data sources related to health in Milwaukee County.



2015-2016

Sponsored by:

Health System Members of the
Milwaukee Health Care Partnership



Aurora Health Care
Children's Hospital of Wisconsin
Columbia St. Mary's Health System
Froedtert Health
Wheaton Franciscan Healthcare

In Collaboration with:

Health Departments from: the City of Milwaukee, Cudahy, Franklin, Greendale, Greenfield,
Hales Corners, North Shore, Oak Creek, Saint Francis, South Milwaukee, Wauwatosa, and
West Allis/West Milwaukee

Prepared by:

Center for Urban Population Health

The Milwaukee Health Care Partnership is a public/private consortium dedicated to improving health care coverage, access and care coordination for underserved populations in Milwaukee County with the goals of improving health outcomes, eliminating disparities and reducing the total cost of care. Its members include the following partnering health systems and hospitals:

Aurora Health Care

Aurora Sinai Medical Center
Aurora St. Luke's Medical
Aurora St. Luke's South Shore
Aurora West Allis Medical Center
Aurora Psychiatric Hospital

Children's Hospital and Health System

Children's Hospital of Wisconsin

Columbia St. Mary's

Columbia St. Mary's Hospital Milwaukee
Sacred Heart Rehabilitation Institute

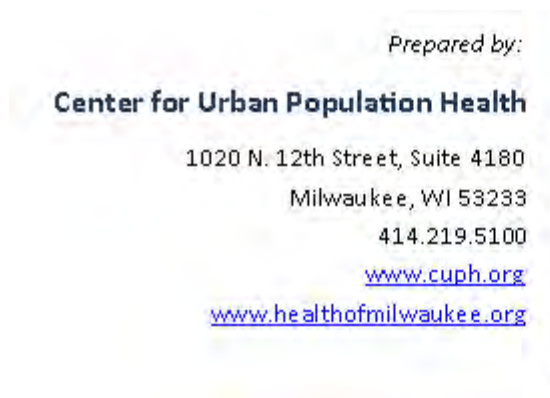
Froedtert Health

Froedtert Hospital

Wheaton Franciscan Healthcare

Wheaton Franciscan Healthcare- St. Francis
Wheaton Franciscan- St. Joseph Campus
Wheaton Franciscan Healthcare- Franklin
Wheaton Franciscan- Midwest Spine and Orthopedic Hospital and Wisconsin Heart Hospital

This report was prepared by the Design, Analysis and Evaluation team at the Center for Urban Population Health. Carrie Stehman, MA, and David Frazer, MPH, prepared this report. If there are any questions, please feel free to contact them at 414.219.5100.



Notes:

In the summer of 2015, the Center for Urban Population Health was enlisted to create reports detailing the health of various counties using secondary data. These health data reports are one piece of a variety of data sources being used by local health systems to describe their communities and the health priorities of their service areas. These reports were specifically developed to compliment a telephone survey being done in each county. Because of their complimentary nature, these reports are not all-inclusive. Indicators for which primary data are being collected were excluded from this report. In addition, rather than repurposing data from the comprehensive county rankings report created by the University of Wisconsin Population Health Institute (2015), the county level data from the rankings report is included in its entirety at the end of this report.

The data used in this report come from publicly available and other data sources. Data for each indicator were presented by race and ethnicity and gender when the data were available. Race data categorized as 'unknown' or 'missing' were rarely included in this report. Therefore, not all races are represented in the data that follows.

In some cases data were not presented by the source from which it was pulled due to their internal confidentiality policies which specify that data will not be released when the number is less than five. In other cases, the data were available but the rates or percentages are not presented in this report. This is due to the indicator having small numbers in the numerator or denominator resulting in rates or percentages that were subject to large year to year fluctuations and, as such, would not have provided a meaningful representation of the data for the population subset.

When applicable, Healthy People 2020 objectives are provided for each indicator. These objectives were not included unless the indicator directly matched with a Healthy People 2020 objective.

University of Wisconsin Population Health Institute. *County Health Rankings* 2015. Accessible at www.countyhealthrankings.org.

Table of Contents

Introduction	5
Highlighted Health Measures	6
Total Population	7
Demographics	8
Race and Ethnicity	9
Age Breakdown	10
Poverty and Insurance Coverage by Poverty Level	11
Fair or Poor General Health	12
Poor Mental Health Days	13
Total Births and Percent Births Receiving First Trimester Care	14
Percent Late or No Prenatal Care	15
Tobacco Use During Pregnancy	16
Low Birth Weight	17
Infant Mortality	18
Premature Birth, Birth Rate Ages 15-19 and Birth Rate Ages 15-17	19
Years of Potential Life Lost	20
Number of Deaths and Mortality Rate	21
Age-Adjusted Mortality Rate and Average Age at Death	22
Number and Rate of Injury Deaths	23
Number and Rate of Suicides	24
Number and Rate of Injury Hospitalizations	25
Number and Rate of Emergency Room Visits for Injuries	26
Number and Cause of Emergency Room Visits for Injuries	27
Ranked Causes of Emergency Room Visits for Injuries	28
Domestic and Child Abuse and Violent Crime	29
Sexually Transmitted Infections and HIV Rates	30
Cancer Incidence	31
Cerebrovascular Disease	32
Heavy Drinking	33
Binge Drinking	34
Adult Smoking	35
Asthma	36
Diabetes	37
Overweight and Obese	38
Non-Emergent or Primary Care Treatable Emergency Department Discharges	40
2013 Milwaukee Health Report Summary and SES Zip Code Map	41
Milwaukee County High Hospital Utilization Corridor	41
Milwaukee Health Professional Shortage Area Maps	42
211 Impact Statistical Call Summary and County Health Rankings	43
Appendix	44

Introduction

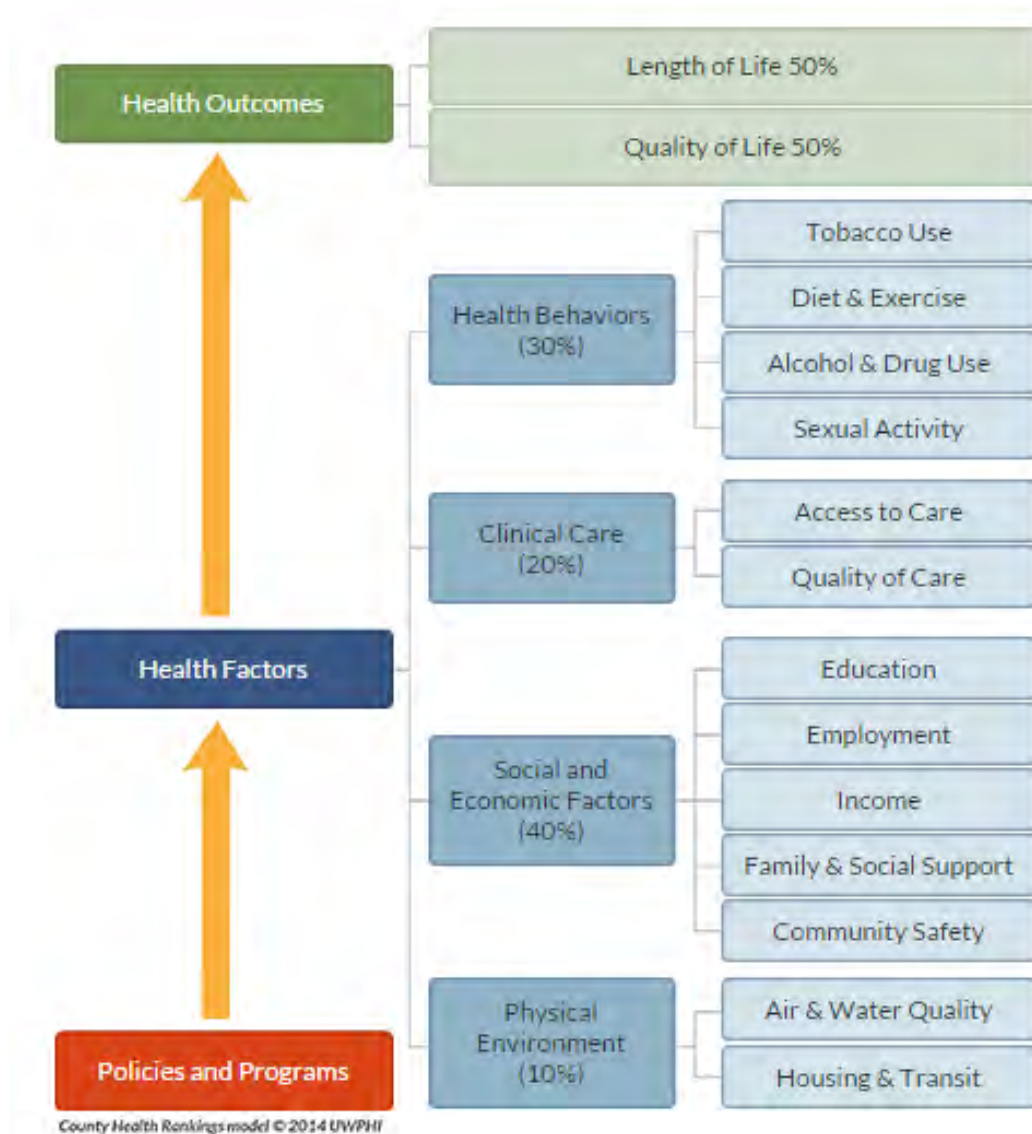
Population Health Framework

This framework recognizes the complexity of the health of communities. The health of a community or health outcomes have four main contributing categories; behaviors, clinical care, social and economic factors and the physical environment. In addition to these main health categories, programs and policies can have a positive or negative impact of the way in which communities experience health.

Contributions to Health Each health factor category has a percentage assigned to it in the framework below. Best research estimates that these are the percentages that that health factor category contributes to an individuals' health.

The Data This report provides data from numerous public and private sources and is covers health outcomes and health factors. The first section highlights key indicators in each category. The second section dives deeper into the categories and provides gender, race, ethnicity and other relevant information depending on the measure. The final section provides links to additional sources of information and context.

Population Health Framework





Highlighted Measures

Health Factors	2012	2013	2014	State 2014
Health Outcomes				
Infant Mortality rate (<365) per 1,000 live	8.1	10.5	7.5	5.7
Years of Potential Life Lost per 100,000 population	7,874.1	8,508.6	7,923.4	6,258.3
Deaths (all causes)	8,025	8,232	8,053	50,136
Mortality Rate (per 100,000)	843.6	864.7	845.9	872.2
Premature Births (<37 weeks of gestation)	11.6%	11.9%	10.3%	9.1%
Poor Mental Health Days	3.7	3.6	3.6	3.0
Health Behaviors				
Adult Smoking	24.0%	22.9%	20.9%	17.4%
Adult Obesity (BMI 30 or greater)	28.9%	28.1%	32.7%	29.3%
Physical Inactivity	27.0%	27.0%	25.0%	22%
Excessive Drinking	8.2%	7.3%	7.3%	7.2%
Sexually Transmitted Infections rate per 100,000	1,394	1,353	1,250	483
Teen Births rate per 1,000 (women 15-19)	40.0	36.6	33.0	18.3
HIV incidence per 100,000	13.8		13.9	4.0
Clinical Care				
Uninsured	14%	14%	14%	10%
Non-Emergent/Primary Care Treatable Emergency Department Discharges	547,156	540,569	636,786	
Social and Economic Factors				
High School Graduation	28.5%	28.2%	28.6%	32.4%
Some College	21.5%	21.1%	29.0%	31.0%
Unemployment	9.6%	9.0%	6.9%	4.9%
Children in Poverty	35%	32%	32%	18%
Physical Environment				
Air pollution particulate matter (micrograms per cubic meter)	8.0	10.7	12.3	11.5



Total Population - Milwaukee Co.				
		2014 (#)	2014 (%)	State 2014
Total Population		953,401	100.0%	5,724,692
Total Population				
	Hispanic or Latino (of any race)	131,473	13.8%	355,292
	White alone	591,716	62.1%	4,965,198
	Black or African American alone	251,135	26.4%	357,758
	American Indian and Alaska Native Alone	5,389	0.6%	49,563
	Asian alone	34,374	3.6%	137,404
	Native Hawaiian and Other Pacific Islander alone	221	<0.1%	1,303
	Some other race alone	39,015	4.1%	92,690
	Two or more races	31,451	3.3%	120,776
Total Population				
	Under 5 years	69,429	7.3%	347,284
	5 to 9 years	64,640	6.8%	365,842
	10 to 14 years	63,407	6.7%	375,173
	15 to 19 years	66,162	6.9%	391,968
	20 to 24 years	74,685	7.8%	393,430
	25 to 34 years	152,002	15.9%	727,998
	35 to 44 years	119,454	12.5%	703,763
	45 to 54 years	123,366	12.9%	847,881
	55 to 59 years	60,069	6.3%	404,117
	60 to 64 years	48,239	5.1%	343,237
	65 to 74 years	56,374	5.9%	439,787
	75 to 84 years	37,085	3.9%	261,421
	85 years and over	18,489	1.9%	122,791

Data accessed from http://factfinder2.census.gov/faces/tableservices/jsf/pages/productview.xhtml?pid=ACS_12_5YR_DP05&prodType=table on January 12, 2016.



Demographics - Milwaukee Co.			
		2014	State 2014
Education level of adults 25 years or older			
	Less than high school degree	13.7%	9.2%
	High school degree	28.6%	32.4%
	Some college/associates	29.0%	31.0%
	Bachelors degree or higher	28.6%	27.4%
Percent of those ages 16 or older who are unemployed			
	Unemployment rate	6.9%	4.9%
Median HH Income (2014 dollars)			
	Median Income	\$43,485	\$52,738
Percent below poverty in last 12 months			
	Percent below poverty	21.9%	13.3%
Language spoken at home			
	English only	83.9%	91.4%
	Spanish	10.0%	4.5%
	Other Indo-European	2.8%	2.1%
	Asian and Pacific Island	2.5%	1.6%
	Other Languages	0.9%	0.3%
Housing			
	Owner Occupied	50.7%	67.7%
	Renter Occupied	49.3%	32.3%

Accessed at: http://factfinder2.census.gov/faces/tableservices/jsf/pages/productview.xhtml?pid=ACS_12_5YR_DP04&prodType=table, http://factfinder2.census.gov/faces/tableservices/jsf/pages/productview.xhtml?pid=ACS_12_5YR_DP03&prodType=table, and http://factfinder2.census.gov/faces/tableservices/jsf/pages/productview.xhtml?pid=ACS_12_5YR_DP02&prodType=table on January 12, 2016.

Race and Ethnicity for Milwaukee County						
	2000 Census		2010 Census		2000 to 2010 Change	
	Number	% of Total	Number	% of Total	Number	Percent
Total Population	940,164	100.0%	947,735	100.0%	7,571	0.8%
Hispanic or Latino Population	82,406	8.8%	126,039	13.3%	43,633	52.9%
Not Hispanic or Latino	857,758	91.2%	821,696	86.7%	-36,062	-4.2%
White Alone	583,481	62.1%	514,958	54.3%	-68,523	-11.7%
Black Alone	228,471	24.3%	248,794	26.3%	20,323	8.9%
American Indian Alone	5,735	0.6%	5,212	0.5%	-523	-9.1%
Asian Alone	23,879	2.5%	32,007	3.4%	8,128	34.0%
Native Hawaiian or Other Pacific Islander	324	<0.1%	296	<0.1%	-28	-8.6%
Some Other Race Alone	1,259	0.1%	1,139	0.1%	-120	-9.5%
Two or More Races	14,609	1.6%	19,290	2.0%	4,681	32.0%

Data accessed from <http://www.getfacts.wisc.edu/mapping.php> on August 12, 2015.

**Age Breakdown for Milwaukee County**

	2000 Census		2010 Census		2000 to 2010 Change	
	Number	% of Total	Number	% of Total	Number	Percent
Total Population	940,164	100.0%	947,735	100.0%	7,571	0.8%
0 to 4	67,141	7.1%	69,364	7.3%	2,223	3.3%
5 to 9	71,253	7.6%	64,289	6.8%	-6,964	-9.8%
10 to 14	69,193	7.4%	63,132	6.7%	-6,061	-8.8%
15 to 19	68,674	7.3%	69,912	7.4%	1,238	1.8%
20 to 24	69,873	7.4%	77,957	8.2%	8,084	11.6%
25 to 29	71,001	7.6%	78,250	8.3%	7,249	10.2%
30 to 34	70,129	7.5%	68,088	7.2%	-2,041	-2.9%
35 to 39	71,716	7.6%	60,231	6.4%	-11,485	-16.0%
40 to 44	71,701	7.6%	59,070	6.2%	-12,631	-17.6%
45 to 49	64,493	6.9%	62,602	6.6%	-1,891	-2.9%
50 to 54	53,764	5.7%	64,588	6.8%	10,824	20.1%
55 to 59	38,037	4.0%	56,696	6.0%	18,659	49.1%
60 to 64	31,504	3.4%	44,423	4.7%	12,919	41.0%
65 to 69	29,641	3.2%	29,200	3.1%	-441	-1.5%
70 to 74	30,279	3.2%	22,684	2.4%	-7,595	-25.1%
75 to 79	26,877	2.9%	20,294	2.1%	-6,583	-24.5%
80 to 84	18,376	2.0%	17,968	1.9%	-408	-2.2%
85+	16,512	1.8%	18,987	2.0%	2,475	15.0%

Data accessed from <http://www.getfacts.wisc.edu/mapping.php> on August 12, 2015.



Poverty - Milwaukee Co.			
	Milwaukee 2014	State 2014	
Percent of all ages in poverty	22.0%	13.2%	

Data Accessed from <http://www.census.gov/did/www/saie/data/interactive/>

#view=StateAndCounty&utilBtn=&yLB=0&stLB=50&clB=46&dlB=0&glB=0&usSts_cbSelected=false&usTot_cbSelected=true&stateTot_cbSelected=true&pLB=0&multiYearSelected=false&multiYearAlertFlag=false&prStateFlag=false&invalidSDYearsFlag=false on January 12, 2016.

Insurance Coverage by Poverty Level: Under 65, All Races and Both Genders, 2013				
Income Category	Name	Demographic Group: #	Uninsured: #	Uninsured: %
All Incomes	Wisconsin	4,767,183	505,168	10.6
All Incomes	Milwaukee County	821,825	113,152	13.8
<= 138% of Poverty	Wisconsin	974,788	200,408	20.6
<= 138% of Poverty	Milwaukee County	260,829	52,182	20
<= 200% of Poverty	Wisconsin	1,469,739	291,544	19.8
<= 200% of Poverty	Milwaukee County	359,139	72,079	20.1
<= 250% of Poverty	Wisconsin	1,878,730	348,764	18.6
<= 250% of Poverty	Milwaukee County	425,865	83,185	19.5
138% to 400% of Poverty	Wisconsin	2,041,844	244,711	12
138% to 400% of Poverty	Milwaukee County	325,217	49,751	15.3
<= 400% of Poverty	Wisconsin	3,016,632	445,119	14.8
<= 400% of Poverty	Milwaukee County	586,046	101,933	17.4

<http://www.census.gov/did/www/saie/data/interactive/>

#view=data&utilBtn=&yLB=0&stLB=50&aLB=0&sLB=0&iLB=1&rLB=0&countyCBSelected=true&insuredRBG=pu &multiYearSelected=false &multiYearAlertFlag=false on Oct. 5, 2015.

The [poverty guidelines](#) are the other version of the federal poverty measure. They are issued each year in the *Federal Register* by the **Department of Health and Human Services (HHS)**. The guidelines are a simplification of the poverty thresholds for use for **administrative** purposes for instance, determining financial eligibility for certain federal programs. The [Federal Register notice of the 2014 poverty guidelines](#) is available. The poverty guidelines are sometimes loosely referred to as the "federal poverty level" (FPL), but that phrase is ambiguous and should be avoided, especially in situations (e.g., legislative or administrative) where precision is important.



Behavioral Risk Factor Survey, Fair or Poor General Health- Milwaukee Co.					
	Milwaukee 2012	Milwaukee 2013	Milwaukee 2014	State 2014	Healthy People 2020 goal
Percent of adults whose self-reported general health status was "fair" or "poor"	16.1%	22.2%	22.9%	15.5%	
Race & Ethnicity					
Non-Hispanic White	11.5%	16.8%	14.9%	13.8%	
Non-Hispanic Black	22.1%	30.2%	38.9%	33.7%	
Non-Hispanic American Indian				32.9%	
Non-Hispanic Other				17.1%	
Hispanic/Latino				20.2%	
Sex					
Male	13.0%	21.6%	17.5%	14.2%	
Female	19.1%	22.8%	27.8%	16.8%	
Education					
Less than High School				36.2%	
High School Graduate/GED	21.8%	27.3%	36.3%	19.5%	
Some College/Tech School	12.1%	14.6%	16.8%	11.9%	
College Graduate/Post Graduate	6.1%	6.7%	7.3%	6.2%	
Household Income					
\$0-\$24,999	28.8%	37.5%	35.8%	29.5%	
\$25,000-\$49,999	11.9%	12.0%	24.3%	15.5%	
\$50,000+	5.2%	10.7%	9.5%	7.3%	
Health Insurance Status					
Health care coverage of any kind	16.0%	22.3%	21.5%	14.9%	
No health care coverage of any kind	16.7%	22.2%		22.2%	

Wisconsin Dept. of Health Services, Division of Public Health, Office of Health Informatics. Wisconsin Interactive Statistics on Health (WISH) data query system, <http://dhs.wisconsin.gov/wish/>, BRFSS Module, accessed January 14, 2016.

Poor Mental Health Days- Milwaukee Co.					
	Milwaukee 2013	Milwaukee 2014	Milwaukee 2015	State	Healthy People 2020 goal
Average number of days adults reported their mental health was not good, out of the past 30 days	3.7	3.6	3.6	3.0	

County Health Rankings & Roadmaps, University of Wisconsin School of Medicine and Public Health, Population Health Institute, <http://www.countyhealthrankings.org/app/wisconsin/2015/rankings/milwaukee/county/outcomes/overall/snapshot>, accessed January 14, 2016.



Wisconsin Dept. of Health Services, Division of Public Health, Office of Health Informatics. Wisconsin Interactive Statistics on Health (WISH) data query system, <http://dhs.wisconsin.gov/wish/>, Birth Counts Module, accessed August 12, 2015 and January 12, 2016.

Total Births - Milwaukee Co.					
	2012	2013	2014	State 2014	Healthy People 2020 goal
Total Births	14,012	14,011	13,929	67,119	
Total Births by Race/Ethnicity of Mother					
White (Non-Hispanic)	5,374	5,444	5,171	48,794	
Black/African American (Non-Hispanic)	4,597	4,675	4,888	6,568	
American Indian/Alaska Native (Non-Hispanic)	65	70	48	727	
Hispanic	2,589	2,469	2,436	6,371	
Laotian or Hmong (Non-Hispanic)	424	413	415	1,606	
Other (Non-Hispanic)	537	536	531	1,684	
Two or more races (Non-Hispanic)	419	383	423	1,301	
Total Births by Education of Mother					
Some High School or Less	2,739	2,534	2,527	7,605	
High School Graduate	3,779	3,866	3,838	16,521	
Some College	3,725	3,704	3,749	20,518	
College Graduate	2,344	2,440	2,333	15,168	
Post Graduate	1,339	1,361	1,398	7,060	

Wisconsin Dept. of Health Services, Division of Public Health, Office of Health Informatics. Wisconsin Interactive Statistics on Health (WISH) data query system, <http://dhs.wisconsin.gov/wish/>, Prenatal Care Module, accessed August 12, 2015 and January 12, 2016.

Percent births to those receiving first trimester care -Milwaukee Co.					
	2012	2013	2014	State 2014	HP 2020 goal
Total Births	14,012	14,011	13,929	67,119	
Percent 1st trimester care	68.5%	68.4%	67.5%	75.4%	77.9
Percent births to those receiving first trimester care by race					
White (Non-Hispanic)	82.0%	79.7%	80.3%	80.3%	
Black/African American (Non-Hispanic)	58.3%	58.7%	58.6%	59.0%	
American Indian/Alaska Native (Non-Hispanic)	43.1%	54.3%	58.3%	60.7%	
Hispanic	62.1%	65.3%	62.9%	64.3%	
Laotian or Hmong (Non-Hispanic)	53.5%	57.4%	55.7%	60.0%	
Other (Non-Hispanic)	68.7%	64.7%	61.0%	67.9%	
Two or more races (Non-Hispanic)	65.4%	66.3%	65.0%	68.9%	



Percent late (started in third trimester) or no prenatal care - Milwaukee Co.					
	2012	2013	2014	State 2014	Healthy People 2020 goal
Total Births	14,012	14,011	13,929	67,119	
Percent late or no prenatal care	5.4%	5.3%	5.8%	4.3%	
Percent late or no prenatal care by race					
White (Non-Hispanic)	3.0%	3.2%	3.7%	3.5%	
Black/African American (Non-Hispanic)	8.1%	7.9%	8.1%	8.2%	
American Indian/Alaska Native (Non-Hispanic)	9.2%	10.0%	10.4%	8.0%	
Hispanic	5.0%	4.8%	5.5%	5.9%	
Laotian or Hmong (Non-Hispanic)	4.5%	3.6%	4.8%	4.3%	
Other (Non-Hispanic)	6.5%	6.9%	6.2%	5.3%	
Two or more races (Non-Hispanic)	7.2%	7.0%	6.4%	5.8%	

Wisconsin Dept. of Health Services, Division of Public Health, Office of Health Informatics. Wisconsin Interactive Statistics on Health (WISH) data query system, <http://dhs.wisconsin.gov/wish/>, Prenatal Care Module, accessed August 12, 2015 and January 12, 2016.



Tobacco Use During Pregnancy - Milwaukee Co.						
	2012	2013	2014	State 2014	Healthy People 2020 goal	
Total Births	14,012	14,011	13,929	67,119	No greater than 1.4%	
Percent of births where mother indicated smoking during pregnancy	12.5%	12.0%	11.1%	13.1%		
Percent of Mothers who smoke by race						
	White (Non-Hispanic)	12.6%	12.7%	10.7%	13.5%	
	Black/African American (Non-Hispanic)	16.6%	0.5%	15.5%	15.9%	
	American Indian/Alaska Native (Non-Hispanic)	33.8%	27.1%	29.2%	39.1%	
	Hispanic	6.7%	5.7%	5.5%	6.2%	
	Laotian or Hmong (Non-Hispanic)	4.7%	5.8%	2.7%	4.4%	
	Other (Non-Hispanic)	1.3%	0.9%	1.5%	1.7%	
	Two or more races (Non-Hispanic)	20.3%	18.3%	16.8%	22.1%	
Percent of Mothers who smoke by education						
	Some High School or Less	19.8%	19.3%	18.6%	21.1%	
	High School Graduate	16.9%	16.0%	15.4%	24.2%	
	Some College	13.0%	12.7%	11.5%	13.8%	
	College Graduate	2.3%	2.7%	1.8%	1.9%	
	Post Graduate	1.3%	1.0%	0.4%	0.6%	

Wisconsin Dept. of Health Services, Division of Public Health, Office of Health Informatics. Wisconsin Interactive Statistics on Health (WISH) data query system, <http://dhs.wisconsin.gov/wish/>, Birth Counts Module, accessed August 12, 2015 and January 12, 2016.

Percent of all births that are low birth weight - Milwaukee Co.						
		2012	2013	2014	State 2014	Healthy People 2020 goal
Total Births		14,012	14,011	13,929	67,119	7.8%
Percent low birthweight (<2,500 grams)		9.1%	9.6%	9.7%	2.1%	
Percent of all births that are low birth weight by race						
	White (Non-Hispanic)	6.5%	6.6%	6.9%	1.8%	
	Black/African American (Non-Hispanic)	13.2%	14.4%	14.6%	4.7%	
	American Indian/Alaska Native (Non-Hispanic)	7.7%	5.7%	6.3%	0.3%	
	Hispanic	7.6%	7.0%	6.7%	2.0%	
	Laotian or Hmong (Non-Hispanic)	8.0%	6.8%	5.3%	2.2%	
	Other (Non-Hispanic)	7.1%	10.6%	9.6%	3.1%	
	Two or more races (Non-Hispanic)	11.5%	12.0%	9.9%	2.0%	

Wisconsin Dept. of Health Services, Division of Public Health, Office of Health Informatics.
 Wisconsin Interactive Statistics on Health (WISH) data query system, <http://dhs.wisconsin.gov/wish/>, Low Birthweight Module, accessed August 12, 2015 and January 13, 2016.



Infant Mortality - Milwaukee Co.					
	2012	2013	2014	State 2014	Healthy People 2020 goal
Total Births	14,012	14,011	13,929	67,119	
Total number of Infant Deaths (<365 days)	113	147	100	380	
Infant mortality rate (<365 days) per 1,000 live births	8.1	10.5	7.2	5.7	6.0
Infant mortality rate per 1,000 live births by race/ethnicity of the mother					
White (Non-Hispanic)	4.5	7.9	3.7	4.9	
Black/African American (Non-Hispanic)	14.6	16.7	12.7	12.5	
American Indian/Alaska Native (Non-Hispanic)	15.4	14.3		6.9	
Hispanic	4.2	3.6	4.9	4.9	
Laotian or Hmong (Non-Hispanic)	4.7	14.5	2.4	3.1	
Other (Non-Hispanic)	5.6	9.3	3.8	4.2	
Two or more races (Non-Hispanic)	11.9	7.8	7.1	6.9	

Wisconsin Dept. of Health Services, Division of Public Health, Office of Health Informatics. Wisconsin Interactive Statistics on Health (WISH) data query system, <http://dhs.wisconsin.gov/wish/>, Infant Mortality Module, accessed August 12, 2015 and January 13, 2016.

**Premature Birth - Milwaukee Co.**

	2012	2013	2014	State 2014	Healthy People 2020 goal
Total Births	14,012	14,011	13,929	67,119	
Percent Premature (<37 weeks of gestation)	11.6%	11.9%	10.3%	9.1%	11.4%
Percent Premature birth by race/ethnicity of mother					
White (Non-Hispanic)	9.4%	9.1%	8.9%	8.8%	
Black/African American (Non-Hispanic)	14.8%	15.9%	13.1%	13.0%	
American Indian/Alaska Native (Non-Hispanic)	15.4%	14.3%	8.3%	10.7%	
Hispanic	10.6%	10.2%	7.6%	8.0%	
Laotian or Hmong (Non-Hispanic)	10.6%	9.9%	5.8%	6.4%	
Other (Non-Hispanic)	9.5%	12.9%	9.8%	8.4%	
Two or more races (Non-Hispanic)	13.6%	14.1%	13.7%	10.0%	

Wisconsin Dept. of Health Services, Division of Public Health, Office of Health Informatics. Wisconsin Interactive Statistics on Health (WISH) data query system, <http://dhs.wisconsin.gov/wish/>, Low Birthweight Module, accessed August 12, 2015 and January 13, 2016.

Birth rate (women 15-19) - Milwaukee Co.

	2012	2013	2014	State 2014	Healthy People 2020 goal
Total Births to Teens 15-19	1,276	1,206	1,056	3,377	
Birth rate per 1,000 (women 15-19)	40.0	36.6	33.0	18.3	

Wisconsin Dept. of Health Services, Division of Public Health, Office of Health Informatics. Wisconsin Interactive Statistics on Health (WISH) data query system, <http://dhs.wisconsin.gov/wish/>, Teen Births - Teen Birth Rates Module, accessed August 12, 2015 and January 13, 2016.

Birth rate (women 15-17) - Milwaukee Co.

	2012	2013	2014	State 2014	Healthy People 2020 goal
Total Births to Teens 15-17	382	339	302	822	
Birth rate per 1,000 (women 15-17)	20.7	17.7	16.4	7.7	



Years of potential life lost (YPLL) per 100,000 population - Milwaukee Co.						
	2012	2013	2014	State 2014	HP 2020 goal	
Total Deaths	8,025	8,232	8,053	50,136		
Mortality Rate	843.6	864.7	845.9	872.2		
YPLL	7,874.1	8,508.6	7,923.4	6,258.3		
Years potential life lost by race per 100,000 population						
	White	7,874.1	8,508.6	6,706.7		6,045.7
	Black	11,582.1	12,262.5	11,417.5		9,819.2
	Hispanic	3,788.5	4,501.5	4,599.6		3,952.5
	American Indian	8,043.4	4,470.0	5,258.9		8,387.6
	Asian	3,232.4	3,462.6	3,525.9		2,682.4
Years potential life lost by gender per 100,000 population						
	Male	9,784.1	10,645.3	9,875.9		7,688.7
	Female	6,041.8	6,450.5	6,044.0		4,805.5

*** Years of Potential Life Lost (YPLL):** An estimate of premature mortality, defined as the number of years of life lost among persons who die before age 75. YPLL is the sum of the differences between age 75 and the age at death for everyone who died before age 75.

Wisconsin Dept. of Health Services, Division of Public Health, Office of Health Informatics. Wisconsin Interactive Statistics on Health (WISH) data query system, <http://dhs.wisconsin.gov/wish/>, Mortality Module, accessed August 12, 2015 and January 13, 2016.



Number of deaths - Milwaukee Co.						
		2012	2013	2014	State 2014	HP 2020 goal
Total Deaths (all causes)		8,025	8,232	8,053	50,136	
Mortality Rate		843.6	864.7	845.9	872.2	
Number of deaths						
	White	6,137	6,232	6,048	46,995	
	Black	1,765	1,868	1,867	2,409	
	Hispanic	270	291	324	711	
	American Indian	46	34	39	408	
	Asian	77	98	99	324	
Number of deaths						
	Male	3,865	4,015	3,913	24,700	
	Female	4,160	4,217	4,140	25,435	

Mortality Rate (Per 100,000) - Milwaukee Co.						
		2012	2013	2014	State 2014	HP 2020 goal
Total Deaths (all causes)		8,025	8,232	8,053	50,136	
Mortality Rate		843.6	864.7	845.9	872.2	
Mortality Rate (Per 100,000)						
	White	963.7	983.2	958.4	921.0	
	Black	661.3	694.8	692.8	587.1	
	Hispanic	209.1	218.1	238.7	191.4	
	American Indian	425.8	309.1	347.5	567.3	
	Asian	209.0	255.4	246.0	198.7	
Mortality Rate (Per 100,000)						
	Male	843.4	872.4	850.0	826.7	
	Female	843.7	857.4	842.1	614.4	

Wisconsin Dept. of Health Services, Division of Public Health, Office of Health Informatics. Wisconsin Interactive Statistics on Health (WISH) data query system, <http://dhs.wisconsin.gov/wish/>, Mortality Module, accessed August 12, 2015 and January 13, 2016.



Age Adjusted Mortality Rate (Per 100,000) - Milwaukee Co.						
		2012	2013	2014	State 2014	Healthy People 2020 goal
Total Deaths (all causes)		8,025	8,232	8,053	50,136	
Age-Adjusted Mortality Rate		758.3	819.5	808.3	711.0	
Age Adjusted Mortality Rate (Per 100,000)						
	White	707.6	765.7	751.8	699.6	
	Black	944.1	1,021.1	996.6	946.3	
	Hispanic	488.7	503.5	565.7	467.3	
	American Indian	700.0	612.0	669.4	933.8	
	Asian	377.0	508.2	486.7	434.9	
Age Adjusted Mortality Rate (Per 100,000)						
	Male	912.8	988.5	960.0	826.7	
	Female	644.2	691.3	693.0	614.4	

Wisconsin Dept. of Health Services, Division of Public Health, Office of Health Informatics. Wisconsin Interactive Statistics on Health (WISH) data query system, <http://dhs.wisconsin.gov/wish/>, Mortality Module, accessed August 12, 2015 and January 13, 2016.

Average Age at Death - Milwaukee Co.						
		2012	2013	2014	State 2014	Healthy People 2020 goal
Average Age at Death		72.4	72.0	72.4	75.3	
Average Age at Death						
	White	76.0	75.5	75.9	76.2	
	Black	60.7	60.6	61.5	61.1	
	Hispanic	60.1	57.3	58.9	57.3	
	American Indian	58.3	62.8	61.6	63.2	
	Asian	63.7	65.7	66.0	66.5	
Average Age at Death						
	Male	68.6	67.9	68.4	71.9	
	Female	76.0	75.9	76.1	78.7	

Wisconsin Dept. of Health Services, Division of Public Health, Office of Health Informatics. Wisconsin Interactive Statistics on Health (WISH) data query system, <http://dhs.wisconsin.gov/wish/>, Mortality Module, accessed August 12, 2015 and January 13, 2016.



Number Injury Related Deaths - Milwaukee Co.					
	2011	2012	2013	State 2013	Healthy People 2020 goal
Total Deaths (all causes)	8,080	8,025	8,232	49,917	
Number Injury Related Deaths	489	534	560	2,927	
Number Injury Related Deaths					
White	389	419	451	2,740	
Black	92	107	101	132	
Hispanic	32	23	32	84	
American Indian				39	
Asian				16	
Number Injury Related Deaths					
Male	284	291	302	1,686	
Female	205	243	258	1,241	

Injury Death Rate Per 100,000 - Milwaukee Co.					
	2011	2012	2013	State 2013	Healthy People 2020 goal
Injury Related Death	51.5	56.1	58.8	51.1	53.3
Injury Death Rate Per 100,000					
White	61.2	65.8	71.2	53.7	
Black	34.5	40.1	37.6	32.5	
Hispanic	25.2	17.8	24	23.1	
American Indian	37.4	46.3	45.4	55.1	
Asian	11.1	8.1	7.8	10.3	
Injury Death Rate Per 100,000					
Male	61.9	63.5	65.6	59.2	
Female	41.7	49.3	52.5	43.0	
Injury Death Rate from Falls Per 100,000				State 2012	
Age 15-44	0.8	1.3		0.9	
Age 45-64	9.1	9.1		6.0	
65+	143.3	162.8		120.9	

Wisconsin Dept. of Health Services, Division of Public Health, Office of Health Informatics. Wisconsin Interactive Statistics on Health (WISH) data query system, <http://dhs.wisconsin.gov/wish/>, Mortality Module; Injury Mortality Module, accessed August 12, 2015.



Number of Suicides - Milwaukee Co.						
	2012	2013	2014	State 2014	Healthy People 2020 goal	
Total Deaths (all causes)	8,025	8,232	8,053	50,136		
Number of Suicides	104	107	94	755		
Number of Suicides						
	White	86	92	79		719
	Black					19
	Hispanic					29
	American Indian					
	Asian					
Number of Suicides						
	Male	81	88	77		589
	Female	23	19	17		166

Suicide Rate Per 100,000 - Milwaukee Co.						
		2012	2013	2014	State 2014	Healthy People 2020 goal
Suicide Rate		10.9	11.2	9.9	13.1	10.2
Suicide Rate Per 100,000						
	White	13.5	14.5	12.5	14.1	
	Black	5.2	4.1	4.5	4.6	
	Hispanic	4.6	5.2	6.6	7.8	
	American Indian	9.3		8.9	11.1	
	Asian	8.1	10.4	5.0	5.5	
Suicide Rate Per 100,000						
	Male	17.7	19.1	16.7	20.6	
	Female	4.7	3.9	3.5	5.7	

Wisconsin Dept. of Health Services, Division of Public Health, Office of Health Informatics. Wisconsin Interactive Statistics on Health (WISH) data query system, <http://dhs.wisconsin.gov/wish/>, Mortality Module, accessed August 12, 2015 and January 13, 2016.



Number Injury Hospitalizations - Milwaukee Co.						
		2012	2013	2014	State 2014	HP 2020 goal
Number of Injury Hospitalizations		10,407	10,919	10,933	51,422	
Number Injury Hospitalizations						
	White	6,858	7,261	7,293	43,481	
	Black	2,788	2,889	2,981	3,954	
	Hispanic	706	760	878	1,622	
	American Indian	50	54	66	543	
	Asian	93	95	125	416	
	Other	342	347	70	139	
	Unknown	276	273	398	2,889	
Number Injury Hospitalizations						
	Male	5,058	5,368	5,265	24,596	
	Female	5,349	5,551	5,668	26,826	

Rate of Injury Hospitalizations - Milwaukee Co.						
		2012	2013	2014	State 2014	HP 2020 goal
	Rate of Injury Hospitalizations	1,094.0	1,146.9	1,148.4	894.6	555.8
	Average Patient Age	57.3	56.6	56.4	58.9	
	Length of Hospital Stay (days)	5.7	5.6	5.9	5.3	
	Total Hospital Charges	\$416.1M	\$454.2M	\$514.1 M	\$2,034,438,838.0	
	Average Hospital Charges	\$39,990	\$41,602	\$47,020	\$39,564.00	
Rate of Injury Hospitalizations						
	White	1,077.0	1,145.6	1,155.7	852.1	
	Black	1,044.7	1,074.6	1,106.2	963.6	
	Hispanic	546.7	569.5	646.9	436.6	
	American Indian	462.8	490.9	588.1	755.1	
	Asian	252.4	247.6	310.6	255.1	
Rate of Injury Hospitalizations						
	Male	1,103.8	1,166.4	1,143.7	861.6	
	Female	1,084.8	1,128.7	1,152.9	927.2	

Wisconsin Dept. of Health Services, Division of Public Health, Office of Health Informatics. Wisconsin Interactive Statistics on Health (WISH) data query system, <http://dhs.wisconsin.gov/wish/>, Injury Hospitalizations Module, accessed August 12, 2015 and January 13, 2016.



Number ED Visits for Injuries - Milwaukee Co.						
		2012	2013	2014	State 2014	HP 2020 goal
Total Number of ED Visits for Injuries		74,217	74,339	86,269	412,000	
	Average Age of ED Injury Patient	32.9	33.4	32.5	36.2	
	Total Hospital Charges for All Injury Patients	\$128.8M	\$143.3M	\$173.3 M	\$731.4 M	
	Average Hospital Charges Per Injury Patient	\$1,736	\$1,929	\$2,008	\$1,775.00	
Number ED Visits for Injuries						
	Male	38,182	37,756	44,030	214,876	
	Female	36,035	36,583	42,239	197,124	

Rate of ED Visits for Injury Per 100,000 Pop. - Milwaukee Co.						
		2012	2013	2014	State 2014	HP 2020 goal
Total Number of ED Visits for Injury		74,217	74,339	86,269	412,000	
Rate of ED Visits for Injury		7,801.5	7,808.3	9,062.0	7,167.8	7533.4
Rate of ED Visits for Injury Per 100,000 Pop.						
	Male	8,332.3	8,203.7	9,564.7	7,527.0	
	Female	7,308.2	7,438.3	8,591.4	6,813.3	

Wisconsin Dept. of Health Services, Division of Public Health, Office of Health Informatics. Wisconsin Interactive Statistics on Health (WISH) data query system, <http://dhs.wisconsin.gov/wish/>, Injury-Related Emergency Department Visits Module, accessed August 12, 2015 and January 13, 2016.



Ranked Causes of Emergency Department Visits for Injury - Milwaukee Co.		
		2014
Total ED Visits for Injury by Cause		
	Falls	23,777
	Struck by or against object or person	12,694
	Motor vehicle traffic crash - Occupant	9,708
	Unspecified cause of injury	7,840
	Cutting or piercing objects	6,121
	Overexertion	5,969
	Other specified classifiable cause of injury	4,148
	Natural or environmental factors	4,129
	Other specified cause of injury, not elsewhere classifiable	3,675
	Poisoning	3,279
	Fire, heat, chemical burns	1,166
	Nontraffic pedal cyclist	869
	Motor vehicle traffic crash - Pedestrian	597
	Firearms	551
	Motor vehicle traffic crash - Other, unspecified	461
	Machinery	330
	Motor vehicle traffic crash - Motorcyclist	310
	Nontraffic transportation	263
	Motor vehicle traffic crash - Pedal cyclist	146
	Suffocation	129

Wisconsin Dept. of Health Services, Division of Public Health, Office of Health Informatics. Wisconsin Interactive Statistics on Health (WISH) data query system, <http://dhs.wisconsin.gov/wish/>, Injury-Related Emergency Department Visits Module, accessed January 13, 2015.



Ranked Causes of Emergency Department Visits for Injury - Milwaukee Co.		
		2014
Rate of ED Visits for Injury by Cause Per 100,000		
	Falls	2,497.6
	Struck by or against object or person	1,333.4
	Motor vehicle traffic crash - Occupant	1,019.8
	Unspecified cause of injury	823.5
	Cutting or piercing objects	643.0
	Overexertion	627.0
	Other specified classifiable cause of injury	435.7
	Natural or environmental factors	433.7
	Other specified cause of injury, not elsewhere classifiable	386.0
	Poisoning	344.4
	Fire, heat, chemical burns	122.5
	Nontraffic pedal cyclist	91.3
	Motor vehicle traffic crash - Pedestrian	62.7
	Firearms	57.9
	Motor vehicle traffic crash - Other, unspecified	48.8
	Machinery	34.7
	Motor vehicle traffic crash - Motorcyclist	32.6
	Nontraffic transportation	27.6
	Motor vehicle traffic crash - Pedal cyclist	15.3
	Suffocation	13.6

Wisconsin Dept. of Health Services, Division of Public Health, Office of Health Informatics. Wisconsin Interactive Statistics on Health (WISH) data query system, <http://dhs.wisconsin.gov/wish/>, Injury-Related Emergency Department Visits Module, accessed January 13, 2016.

**Domestic Abuse Incidents - Milwaukee Co.**

	Milwaukee 2012	State 2012	
Total Number of Reported Domestic Abuse Incidents	7,953	28,729	

Data accessed from <http://www.doj.state.wi.us/sites/default/files/ocvs/not-victim/domestic-abuse-incident-report-2012-20140530.pdf> on August 12, 2015.

Child Abuse - Milwaukee Co.

	Milwaukee 2014	State 2014	
Child Protective Service (CPS) Reports per 1,000 Children	52.5	32.5	

Data accessed from <http://dcf.wisconsin.gov/cwreview/reports/CAN/2014/2014CANReport.pdf> on January 13, 2016.

Violent Crime- Milwaukee Co.

	Milwaukee 2013	Milwaukee 2014	Milwaukee 2015	State 2015	Healthy People 2020 goal
Number of reported violent crime offenses per 100,000 population	783.0	751.0	800.0	255.0	

County Health Rankings & Roadmaps, University of Wisconsin School of Medicine and Public Health, Population Health Institute, <http://www.countyhealthrankings.org/app/wisconsin/2015/rankings/milwaukee/county/outcomes/overall/snapshot>, accessed January 19, 2016.



Sexually Transmitted Disease Incidence Rate per 100,000 - Milwaukee Co.					
	2012	2013	2014	State 2014	HP 2020 goal
STD Incidence Rate per 100,000	1,394.0	1,353.0	1,250.0	483.0	
STD Incidence Rate per 100,000					
White	224.0	232.0	203.0	215.0	
African American	2,835.0	2,566.0	2,261.0	2,261.0	
Hispanic	524.0	498.0	392.0	490.0	
American Indian	352.0	518.0	280.0	602.0	
Asian/Pacific Islander	419.0	284.0	256.0	285.0	
Other					
Unknown					
STD Incidence Rate per 100,000					
Male	947.0	979.0	898.0	325.0	
Female	1,811.0	1,702.0	1,577.0	638.0	

Note: Information for STD Incidence only includes data on chlamydia, gonorrhea, and syphilis, not all existing STDs.

Data accessed from <https://www.dhs.wisconsin.gov/std/2014datamap.htm>, <https://www.dhs.wisconsin.gov/std/2013datamap.htm>, and <https://www.dhs.wisconsin.gov/std/2012datamap.htm> on August 12, 2015 and January 13, 2016.

HIV Incidence per 100,000 - Milwaukee Co.				
	Milwaukee 2009-2013	Milwaukee 2014	State 2014	HP 2020 goal
HIV Incidence Rate	13.8	13.9	4.0	
HIV Incidence per 100,000				
White	5.3	4.1	1.6	
African American	32.4	32.6	27.9	
Hispanic	13.3	21.5	12.1	
American Indian	27.8	0.0	8.1	
Asian/Pacific Islander	11.0	3.0	3.7	
Multi-racial	19.5	5.2	2.5	
HIV Incidence per 100,000				
Male	22.6	24.5	6.8	
Female	5.4	3.9	1.2	

Data from <http://www.dhs.wisconsin.gov/aids-hiv/stats/map.htm> and accessed on August 12, 2015.



Cancer Incidence Age-Adjusted Rate per 100,000 - Milwaukee Co.					
		Milwaukee 2008-2012	State 2012	HP 2020 goal	
Cancer Incidence Rate		503.4	447.7		
Cancer Incidence Age-Adjusted Rate per 100,000					
	White		439.3		
	African American		541.3		
	Hispanic		366.5		
	American Indian/Alaska Native		508.2		
	Asian/Pacific Islander		286.8		
Cancer Incidence Age-Adjusted Rate per 100,000					
	Male	577.0	481.6		
	Female	455.7	426.8		

Wisconsin Dept. of Health Services, Division of Public Health, Office of Health Informatics. Wisconsin Interactive Statistics on Health (WISH) data query system, <http://dhs.wisconsin.gov/wish/>. Cancer Module, accessed August 12, 2015.

Cancer Incidence Age-Adjusted Rate per 100,000 - Milwaukee Co.					
		Milwaukee 2008-2012		State 2012	
		Male	Female	Male	Female
Cancer Incidence Age-Adjusted Rate per 100,000					
	Female Breast		132.1		125.4
	Cervical (Cervix Uteri)		8.7		6.3
	Colorectal	53.5	39.3	42.4	31.6
	Lung and Bronchus	88.1	61.7	66.7	53.4
	Prostate Cancer	144.6		103.2	
Cancer Mortality Age-Adjusted Rate per 100,000					
		Milwaukee 2007-2011		State 2011	
		Male	Female	Male	Female
	Female Breast		24.1		21.4
	Cervical (Cervix Uteri)		2.7		1.7
	Colorectal	21.5	13.0	18.6	11.9
	Lung and Bronchus	67.3	43.8	56.1	40.8
	Prostate Cancer	25.3		23.5	

Wisconsin Dept. of Health Services, Division of Public Health, Office of Health Informatics. Wisconsin Interactive Statistics on Health (WISH) data query system, <http://dhs.wisconsin.gov/wish/>. Cancer Module, accessed August 12, 2015.



Cerebrovascular Disease - Milwaukee Co.			
	Milwaukee 2012	State 2012	
Total Number of Deaths due to Cerebrovascular Disease	384	2,506	
Cerebrovascular Disease Death Rate per 100,000 Residents	40.0	44.0	

Data accessed from <https://www.dhs.wisconsin.gov/stats/phprofiles/milwaukee.htm> and <http://www.dhs.wisconsin.gov/localdata/counties/wisconsin.htm> on August 12, 2015.

The term cerebrovascular disease includes all disorders in which an area of the brain is temporarily or permanently affected by ischemia or bleeding and one or more of the cerebral blood vessels are involved in the pathological process.

Cerebrovascular disease includes stroke, carotid stenosis, vertebral stenosis and intracranial stenosis, aneurysms, and vascular malformations. (American Association of Neurological Surgeons)



Behavioral Risk Factor Survey, Heavy Drinking - Milwaukee Co.					
	Milwaukee 2012	Milwaukee 2013	Milwaukee 2014	State 2014	Healthy People 2020 goal
Percent of adults reporting they are heavy drinkers	8.2%	7.3%	7.3%	7.2%	
Race & Ethnicity					
Non-Hispanic White	8.6%	9.4%	9.6%	7.7%	
Non-Hispanic Black	11.3%	2.4%	4.5%	3.3%	
Non-Hispanic Other				3.0%	
Hispanic/Latino				4.9%	
Sex					
Male	6.8%	8.8%	8.2%	7.7%	
Female	9.5%	6.1%	6.4%	6.6%	
Education					
Less than High School				4.7%	
High School Graduate/GED	5.1%	4.2%	5.1%	7.8%	
Some College/Tech School	13.3%	10.1%	9.2%	8.2%	
College Graduate/Post Graduate	8.0%	10.4%	7.5%	6.1%	
Household Income					
\$0-\$24,999	4.8%	5.1%	4.8%	6.1%	
\$25,000-\$49,999	10.1%	7.5%	9.5%	7.4%	
\$50,000+	10.4%	10.3%	8.9%	8.1%	

Wisconsin Dept. of Health Services, Division of Public Health, Office of Health Informatics. Wisconsin Interactive Statistics on Health (WISH) data query system, <http://dhs.wisconsin.gov/wish/>, BRFSS Module, accessed January 12, 2016.

Heavy drinkers are men reporting an average of more than 2 drinks per day and women reporting an average of more than 1 drink per day during the past 30 days.



Behavioral Risk Factor Survey, Binge Drinking - Milwaukee Co.					
	Milwaukee 2012	Milwaukee 2013	Milwaukee 2014	State 2014	Healthy People 2020 goal
Percent of adults reporting they binge drink	22.2%	22.8%	22.5%	22.1%	
Race & Ethnicity					
Non-Hispanic White	26.3%	23.6%	28.3%	22.8%	
Non-Hispanic Black	15.5%	18.3%	10.3%	13.6%	
Non-Hispanic Other				13.7%	
Hispanic/Latino				25.3%	
Sex					
Male	27.5%	29.5%	29.4%	29.3%	
Female	17.4%	16.8%	16.3%	15.0%	
Education					
Less than High School				12.5%	
High School Graduate/GED	23.2%	19.9%	21.4%	22.0%	
Some College/Tech School	27.6%	27.3%	24.3%	25.1%	
College Graduate/Post Graduate	25.0%	26.6%	25.9%	21.9%	
Household Income					
\$0-\$24,999	19.8%	25.9%	15.7%	18.7%	
\$25,000-\$49,999	23.5%	23.5%	25.1%	22.7%	
\$50,000+	29.5%	23.5%	28.5%	25.7%	

Wisconsin Dept. of Health Services, Division of Public Health, Office of Health Informatics. Wisconsin Interactive Statistics on Health (WISH) data query system, <http://dhs.wisconsin.gov/wish/>, BRFSS Module, accessed January 14, 2016.

Binge drinking defined by BRFSS: "Female binge drinkers are those reporting they had 4 or more alcoholic drinks on at least one occasion during the past 30 days. For males, binge drinkers [are] those reporting they had 5 or more alcoholic drinks on at least one occasion during the past 30 days."



Behavioral Risk Factor Survey, Current Cigarette Smoker - Milwaukee Co.					
	Milwaukee 2012	Milwaukee 2013	Milwaukee 2014	State 2014	Healthy People 2020 goal
Percent of adults reporting they are a current cigarette smoker	24.0%	22.9%	20.9%	17.4%	
Race & Ethnicity					
Non-Hispanic White	18.3%	22.3%	17.0%	16.4%	
Non-Hispanic Black	30.3%	30.2%	36.3%	35.1%	
Non-Hispanic Other				16.6%	
Hispanic/Latino				15.3%	
Sex					
Male	25.7%	24.7%	24.1%	18.7%	
Female	22.5%	21.3%	18.0%	16.1%	
Education					
Less than High School				33.1%	
High School Graduate/GED	23.9%	32.1%	19.9%	21.2%	
Some College/Tech School	21.9%	20.6%	24.0%	17.8%	
College Graduate/Post Graduate	12.1%	8.3%	7.0%	5.5%	
Household Income					
\$0-\$24,999	35.3%	33.2%	34.0%	31.6%	
\$25,000-\$49,999	25.6%	25.8%	24.8%	19.2%	
\$50,000+	13.9%	13.1%	10.2%	10.3%	

Wisconsin Dept. of Health Services, Division of Public Health, Office of Health Informatics. Wisconsin Interactive Statistics on Health (WISH) data query system, <http://dhs.wisconsin.gov/wish/>, BRFs Module, accessed January 14, 2016.

Behavioral Risk Factor Survey, Asthma- Milwaukee Co.					
	Milwaukee 2012	Milwaukee 2013	Milwaukee 2014	State 2014	Healthy People 2020 goal
Percent of adults current asthma diagnosis	9.0%	16.1%	14.4%	10.2%	
Race & Ethnicity					
Non-Hispanic White	8.0%	11.9%	9.3%	9.3%	
Non-Hispanic Black	11.0%	25.2%	28.0%	23.4%	
Non-Hispanic American Indian				16.5%	
Non-Hispanic Other				9.3%	
Hispanic/Latino				12.0%	
Sex					
Male	7.8%	10.8%	12.3%	7.7%	
Female	10.2%	21.0%	16.4%	12.6%	
Education					
Less than High School				10.8%	
High School Graduate/GED	7.6%	13.5%	14.5%	10.3%	
Some College/Tech School	10.9%	15.4%	14.5%	11.0%	
College Graduate/Post Graduate	7.5%	10.3%	11.6%	8.6%	
Household Income					
\$0-\$24,999	12.7%	22.1%	19.6%	15.5%	
\$25,000-\$49,999	9.7%	7.5%	12.2%	9.7%	
\$50,000+	5.3%	13.5%	8.6%	7.1%	
Health Insurance Status					
Health care coverage of any kind	8.5%	15.7%	14.8%	10.2%	
No health care coverage of any kind	12.0%	18.9%		10.8%	

Wisconsin Dept. of Health Services, Division of Public Health, Office of Health Informatics. Wisconsin Interactive Statistics on Health (WISH) data query system, <http://dhs.wisconsin.gov/wish/>, BRFSS Module, accessed January 14, 2016.



Behavioral Risk Factor Survey, Diabetes- Milwaukee Co.					
	Milwaukee 2012	Milwaukee 2013	Milwaukee 2014	State 2014	Healthy People 2020 goal
Percent of adults diagnosed with diabetes, excluding pregnancy-related diabetes	8.2%	9.7%	8.7%	9.0%	
Race & Ethnicity					
Non-Hispanic White	5.6%	7.1%	7.8%	8.8%	
Non-Hispanic Black	13.2%	16.4%	11.4%	16.3%	
Non-Hispanic American Indian				24.5%	
Non-Hispanic Other				5.6%	
Hispanic/Latino				3.5%	
Sex					
Male	9.5%	8.9%	8.0%	9.2%	
Female	7.0%	10.4%	9.4%	8.7%	
Education					
Less than High School				14.9%	
High School Graduate/GED	6.7%	13.2%	8.0%	10.1%	
Some College/Tech School	6.5%	7.0%	8.5%	9.0%	
College Graduate/Post Graduate	4.3%	5.7%	4.7%	5.1%	
Household Income					
\$0-\$24,999	14.2%	9.2%	8.3%	11.9%	
\$25,000-\$49,999	7.6%	10.3%	7.7%	10.5%	
\$50,000+	2.9%	6.3%	6.3%	5.9%	
Health Insurance Status					
Health care coverage of any kind	8.4%	9.0%	9.5%	9.4%	
No health care coverage of any kind	7.1%	13.6%		4.2%	

Wisconsin Dept. of Health Services, Division of Public Health, Office of Health Informatics. Wisconsin Interactive Statistics on Health (WISH) data query system, <http://dhs.wisconsin.gov/wish/>, BRFS Module, accessed January 14, 2016.



Behavioral Risk Factor Survey, Overweight- Milwaukee Co.					
	Milwaukee 2012	Milwaukee 2013	Milwaukee 2014	State 2014	Healthy People 2020 goal
Percent of adults who are overweight (BMI between 25.0 and 29.9)	34.0%	32.7%	32.2%	34.0%	
Race & Ethnicity					
Non-Hispanic White	32.0%	32.6%	35.5%	35.8%	
Non-Hispanic Black	32.4%	32.5%	31.9%	24.6%	
Non-Hispanic American Indian				14.9%	
Non-Hispanic Other				22.1%	
Hispanic/Latino				26.5%	
Sex					
Male	40.5%	40.6%	36.8%	41.4%	
Female	27.8%	25.6%	27.9%	26.9%	
Education					
Less than High School				26.9%	
High School Graduate/ GED	33.3%	38.8%	31.7%	35.3%	
Some College/Tech School	34.4%	32.1%	31.8%	33.4%	
College Graduate/Post Graduate	35.8%	32.9%	37.2%	37.1%	
Household Income					
\$0-\$24,999	32.9%	28.2%	29.4%	28.5%	
\$25,000-\$49,999	33.4%	45.6%	36.2%	37.0%	
\$50,000+	38.4%	33.3%	31.7%	37.1%	
Health Insurance Status					
Health care coverage of any kind	32.8%	31.9%	33.0%	34.9%	
No health care coverage of any kind	40.6%	37.9%		24.3%	

Wisconsin Dept. of Health Services, Division of Public Health, Office of Health Informatics. Wisconsin Interactive Statistics on Health (WISH) data query system, <http://dhs.wisconsin.gov/wish/>, BRFSS Module, accessed January 14, 2016.



Behavioral Risk Factor Survey, Obesity- Milwaukee Co.					
	Milwaukee 2012	Milwaukee 2013	Milwaukee 2014	State 2014	Healthy People 2020 goal
Percent of adults who are obese (BMI 30 or greater)	28.9%	28.1%	32.7%	29.3%	
Race & Ethnicity					
Non-Hispanic White	24.6%	26.0%	27.2%	28.5%	
Non-Hispanic Black	40.6%	36.1%	41.1%	39.7%	
Non-Hispanic American Indian				55.9%	
Non-Hispanic Other				21.7%	
Hispanic/Latino				32.3%	
Sex					
Male	24.5%	29.8%	35.4%	30.9%	
Female	33.1%	26.5%	30.2%	27.8%	
Education					
Less than High School				30.5%	
High School Graduate/GED	33.5%	25.8%	38.7%	31.6%	
Some College/Tech School	22.2%	24.5%	34.0%	31.5%	
College Graduate/Post Graduate	21.9%	22.9%	24.0%	23.2%	
Household Income					
\$0-\$24,999	28.0%	28.4%	35.7%	32.2%	
\$25,000-\$49,999	32.8%	19.7%	29.4%	30.9%	
\$50,000+	29.5%	34.5%	34.8%	28.8%	
Health Insurance Status					
Health care coverage of any kind	30.3%	29.0%	32.80%	24.3%	
No health care coverage of any kind	22.3%	24.1%		25.4%	

Wisconsin Dept. of Health Services, Division of Public Health, Office of Health Informatics. Wisconsin Interactive Statistics on Health (WISH) data query system, <http://dhs.wisconsin.gov/wish/>, BRFs Module, accessed January 14, 2016.



Total Emergency Department Discharges by Acuity- Milwaukee Co.					
	Milwaukee 2012	Milwaukee 2013	Milwaukee 2014	State 2014	Healthy People 2020 goal
Total ED Discharges	547,156	540,569	636,786		
Total ED Visits	335,561	330,879	385,057		
Substance Abuse/Mental Health/Other	54,718	58,020	67,620		
Non-Emergent or Primary Care Treatable	156,877	151,670	184,109		

Wisconsin Hospital Association Information Center. NYU Algorithm (Billings 200a, 200b). Accessed January 14, 2016.

2013 Milwaukee Health Report Summary

Center for Urban Population Health

What is it? This report summarizes the current health of the city and distribution of key factors that may have implications for future health. The report provides information regarding health disparities among the socio-economic groups within the city of Milwaukee and offers comparisons of health outcomes and determinants between the City of Milwaukee, the State of Wisconsin and the United States. The report draws from national, state and local data sources.

The report found that the lower SES zip code group continues to bear the burden of health disparities. This group experienced worse health compared to Wisconsin and the US across 36 measures, and worse health in even more areas compared to the Middle and Higher SES groups within Milwaukee.

Of note, obesity status increased in the lower and middle SES groups again in this year's report. Binge Drinking was highest in the higher SES group and lowest in the middle SES group. Percentages for all SES groups were well above values for the U.S. overall.

The following table presents all measures where the lower SES zip code group had at least 2 times greater risk for an adverse health outcome in comparison to the higher SES zip code group. The greater the risk ratio, the greater the risk for the lower SES group. For example, teens in the lower SES zip codes have 4.62 times greater risk for pregnancy than teens in the higher SES zip codes.

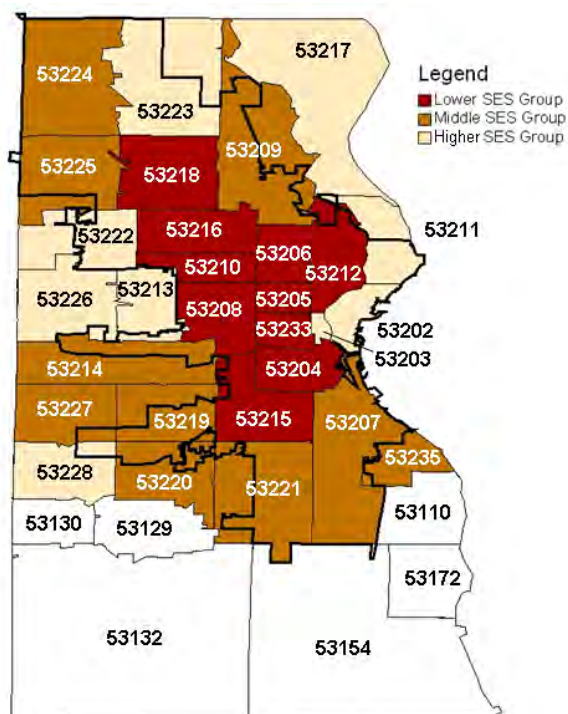
Measure	Risk Ratio
No access to healthy food	9.29
Teen birth rate	4.62
Chlamydia rate	4.48
% single parent households	3.88
HIV Infection	3.55
Lead poisoning	3.35
Uninsured	2.6
Poor mental health days	2.53
Did not always wear seat belt	2.36
Poor or fair health	2.25

Greer, D.M., Baumgardner, D.J., Bridgewater, F.D., Frazer, D.A., Kessler, C.L., LeCounte, E.S., Swain, G.R., & Cisler, R.A. (2013). Milwaukee Health Report 2013: Health Disparities in Milwaukee by Socioeconomic Status. Center for Urban Population Health: Milwaukee, WI.

Milwaukee Health Report SES Zip Code Groups

Center for Urban Population Health

Map of the City of Milwaukee by ZIP Code and SES Group.



Milwaukee County High Hospital Utilization Corridor

Journal of Urban Health

A study published in the Journal of Urban Health, looked at poverty, wealth, and health care utilization by geographic area in Milwaukee and Los Angeles. In Milwaukee, the study found that among working age adults, virtually all of the excess hospital utilization was attributable to very high utilization in Milwaukee's segregated "poverty corridor."

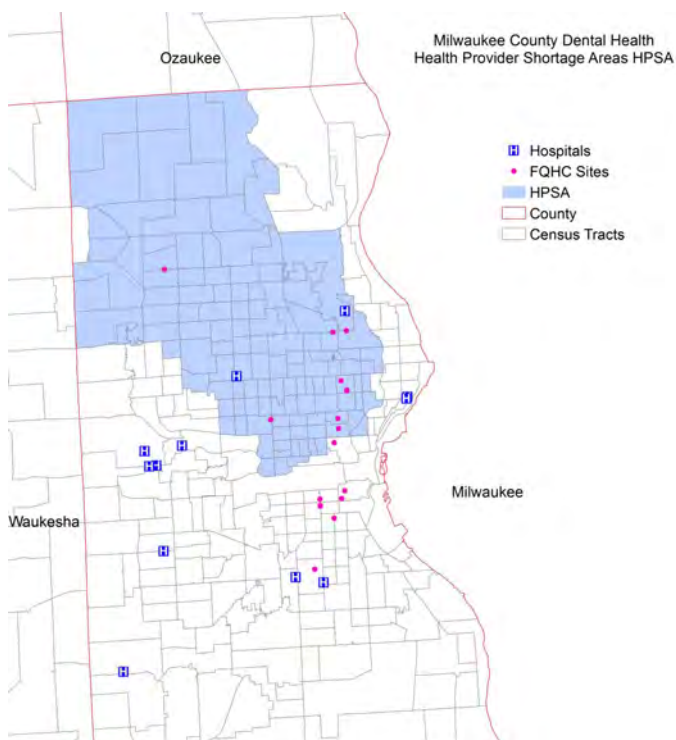
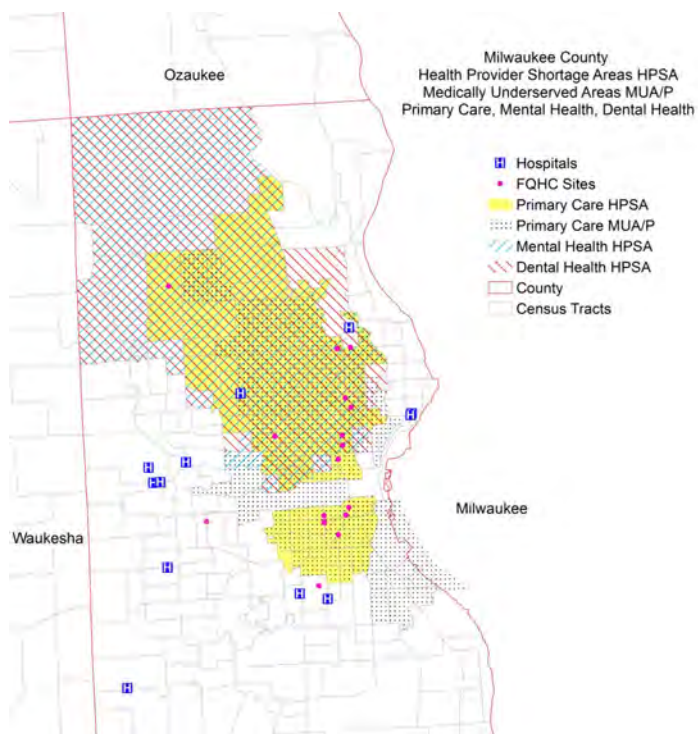
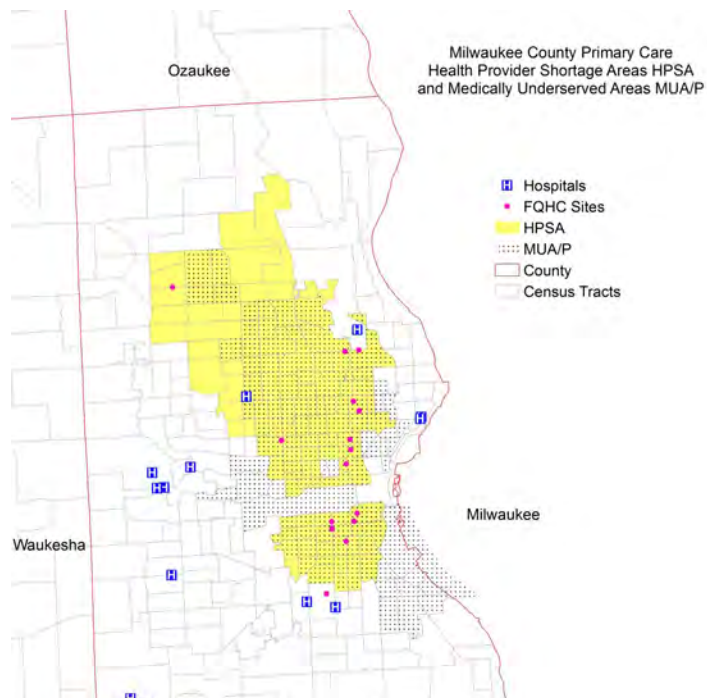
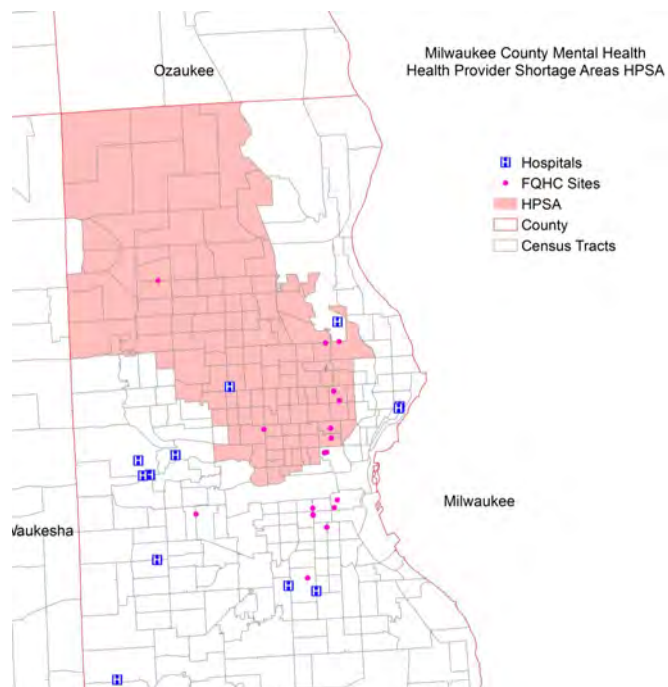
In comparing utilization among adults ages 35-64 in the lowest vs. the highest income quartile zip codes in Milwaukee County, the study found that the number of hospital days per 1,000 residents of the lowest income zip codes was greater by

- 347% for heart failure
- 266% for diabetes
- 610% for chronic obstructive pulmonary disease (COPD)

Cooper, R., Cooper, M., McGinley, E., Fan, X., Rosenthal, J.T., Poverty, Wealth, and Health Care Utilization: A Geographic Assessment. Journal of Urban Health: Bulletin of the New York Academy of Medicine, Vol. 89, No. 5. pgs: 828-847. (2012)

Milwaukee Health Professional Shortage Area Maps

Wisconsin Primary Health Care Association - Prepared 1/12/16



IMPACT 2-1-1 Statistical Call Report

IMPACT 2-1-1

What is it? This report provides an overview of the types and quantities of calls seeking resources and services in Milwaukee County. The report covers from January through December 2015.

The table is aggregated across each zip code and includes all service requests with 1000 or more individual callers.

The full report provides detail on each zip code as well as the full listing of 331 services and the quantity of their respective requests.

Notice that many of the service request areas could be collapsed into broader areas. The most common requests are for basic needs including shelter and housing/rental assistance followed by food and clothing.

January - December 2015

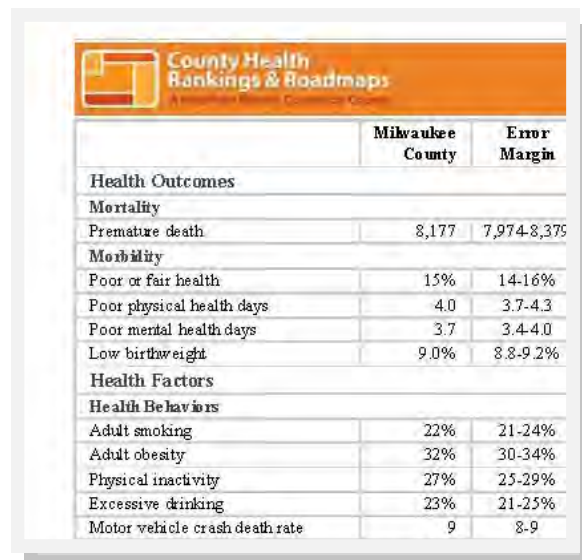
Service	Number of Calls
Community Shelter	34,231
Food Pantry	24,278
Electric Service Payment Assistance	4,437
Household Goods Vouchers	3,168
Rent Payment Assistance	2,838
Low Income/Subsidized Private Rental Housing	2,751
Emergency Shelter Clearinghouses	2,734
Aging and Disability Resource Centers	2,448
Soup Kitchens	2,236
General Clothing Provision	1,768
Formula / Baby Food	1,572
Domestic Violence Shelters	1,498
General Furniture Provision	1,429
Comprehensive Information and referral	1,228
Director Assistance	1,183
Housing Search Assistance	1,177
Emergency Food Clearinghouses	1,168
VITA Programs	1,038

County Health Rankings

UW Population Health Institute

Milwaukee County consistently ranks among the worst counties in the state of Wisconsin with regard to Health Outcomes and Health Factors. The 2015 County Health Rankings found Milwaukee County ranked 71st of 72 counties for Health Outcomes and 71st for Health Factors.

To learn more about the methods and indicators, please visit www.countyhealthrankings.org or to view the Milwaukee specific page visit: <http://www.countyhealthrankings.org/app/wisconsin/2015/rankings/milwaukee/county/outcomes/overall/snapshot>



	Milwaukee County	Error Margin
Health Outcomes		
Mortality		
Premature death	8,177	7,974-8,375
Morbidity		
Poor or fair health	15%	14-16%
Poor physical health days	4.0	3.7-4.3
Poor mental health days	3.7	3.4-4.0
Low birthweight	9.0%	8.8-9.2%
Health Factors		
Health Behaviors		
Adult smoking	22%	21-24%
Adult obesity	32%	30-34%
Physical inactivity	27%	25-29%
Excessive drinking	23%	21-25%
Motor vehicle crash death rate	9	8-9

Appendix 1: Key Local Reports Addressing Top Health Issues

Mental Health

Analysis of Adult Bed Capacity for Milwaukee County Behavioral Health System, September 2014

<http://media.jrn.com/documents/mentalreport09162014.pdf>

This report provides an analysis of adult psychiatric inpatient bed capacity in Milwaukee County. It looks at aspects of the behavioral health system based on available data, recommends adult psychiatric inpatient bed capacity for Milwaukee County based on current utilization, and suggests considerations for determining future inpatient bed need.

Executive Summary: Fiscal Analysis of Mental Health Redesign in Milwaukee County

<http://publicpolicyforum.org/sites/default/files/FiscalAnalysisMentalHealthRedesign-Executive%20Summary.pdf>

This report assesses the fiscal impacts of the County's mental health redesign activities to date and considers how the implementation of a fully redesigned system of care will impact the Behavioral Health Division's financial situation in the subsequent two years.

Transforming the Adult Mental Health Care Delivery System in Milwaukee County, October 2010

http://www.hsri.org/files/uploads/publications/Milwaukee_Mental_Health_System_Redesign_Final_Report.pdf

This report presents the findings from a comprehensive planning effort to redesign the mental health care system in Milwaukee County.

Drug and Alcohol Use

Alcohol and Other Drug Abuse Services in Milwaukee County, 2014

https://www.impactinc.org/fileadmin/user_upload/planning-council/PDF/GMF-AODA-final-complete.pdf

This report presents an overview of alcohol and other drug services in Milwaukee County, documents the need for these services, and suggests next steps to address these services in the county.

Controlled Substance Prescribing Patterns—Prescription Behavior Surveillance System, Eight States, 2013

<http://www.cdc.gov/mmwr/preview/mmwrhtml/ss6409a1.htm>

This report presents rates of population-based prescribing and behavioral measures of drug misuse in the general population that have not been available previously for comparison among demographic groups and states. States can use their prescription drug monitoring programs to generate population-based measures for the prescribing of controlled substances and for behaviors that suggest their misuse.

Report Brief: Marijuana in Milwaukee: An Overview of Municipal Marijuana Policy in Milwaukee and Other U.S. Cities, May 2015

<http://publicpolicyforum.org/sites/default/files/MarijuanaInMilwaukee-Brief.pdf>

This report was produced to address potential implications of policy changes that might reduce the fine for first-time possession or small amounts of marijuana in the City of Milwaukee.



Injury and Violence

Milwaukee Homicide Review Commission Mid Year Report, July 27, 2015

<http://city.milwaukee.gov/ImageLibrary/Groups/cityHRC/reports/sixmonthreportv2.6.pdf>

This report presents data about homicides and non-fatal shootings in the first half of 2015. It documents homicide rates, racial disparities, contributing factors, and provides recommendations to address violence.

Milwaukee Homicide Review Commission 2014 Annual Report

<http://city.milwaukee.gov/ImageLibrary/Groups/cityHRC/reports/2014AnnualReportV.2.5.pdf>

This report presents data about homicides and non-fatal shootings in Milwaukee in 2014 that may be useful to local residents, law enforcement, grant makers, media, and social service providers.

Healthy Growth and Development

Success for Every Child: Milwaukee Succeeds Milestone Report 2014

<http://milwaukesucceeds.org/goals-and-data/milestone-report/milestone-report-2014/>

Milwaukee Succeeds presents their work toward achieving success for every child in the city.

Other

Vital Signs: Benchmarking Metro Milwaukee 2013

http://www.greatermilwaukeefoundation.org/files/4713/7513/4080/VitalSigns_Milwaukee_2013.pdf

This report compares the Milwaukee metro area with 15 others across the country. Indicators in the report are organized within five sections, each describing a facet of the community that contributes to economic competitiveness: Population Vitality, Economic Strength, Personal Prosperity, Lifelong Learning, and Community Well-being.

Leading Indicators, Leading Change: IMPACT 2-1-1's First Ten Years and Future Prospects

http://www.impactinc.org/fileadmin/user_upload/reports/10_Year_Report-FINAL_v2.pdf

On the occasion of its 10th anniversary, IMPACT 2-1-1 looked back over its accomplishments and into the future at new ways to enhance the health and wellbeing of the residents of southeastern Wisconsin. This report contains detailed analyses of call data for the entire ten-year period.

Treatment Alternatives and Diversion (TAD) Program: Participant Outcome Evaluation and Cost-Benefit Report (2007-2013), July 2014

<http://doc.wi.gov/Documents/WEB/ABOUT/DATARESEARCH/RESEARCHREPORTS/TAD%20Full%20Report%20-%202014%20Evaluation.pdf>

The Treatment Alternatives and Diversion (TAD) program targets non-violent offenders with the goal of promoting public safety, reducing prison and jail populations, reducing prosecution and incarceration costs, reducing recidivism, and improving the welfare of participants. This report examines outcomes of offenders that participated in TAD projects in nine Wisconsin counties, including Milwaukee County, between January 1, 2007 and December 31, 2013.