

Figure 1. Assessment for Anaphylaxis^{8,10-12}

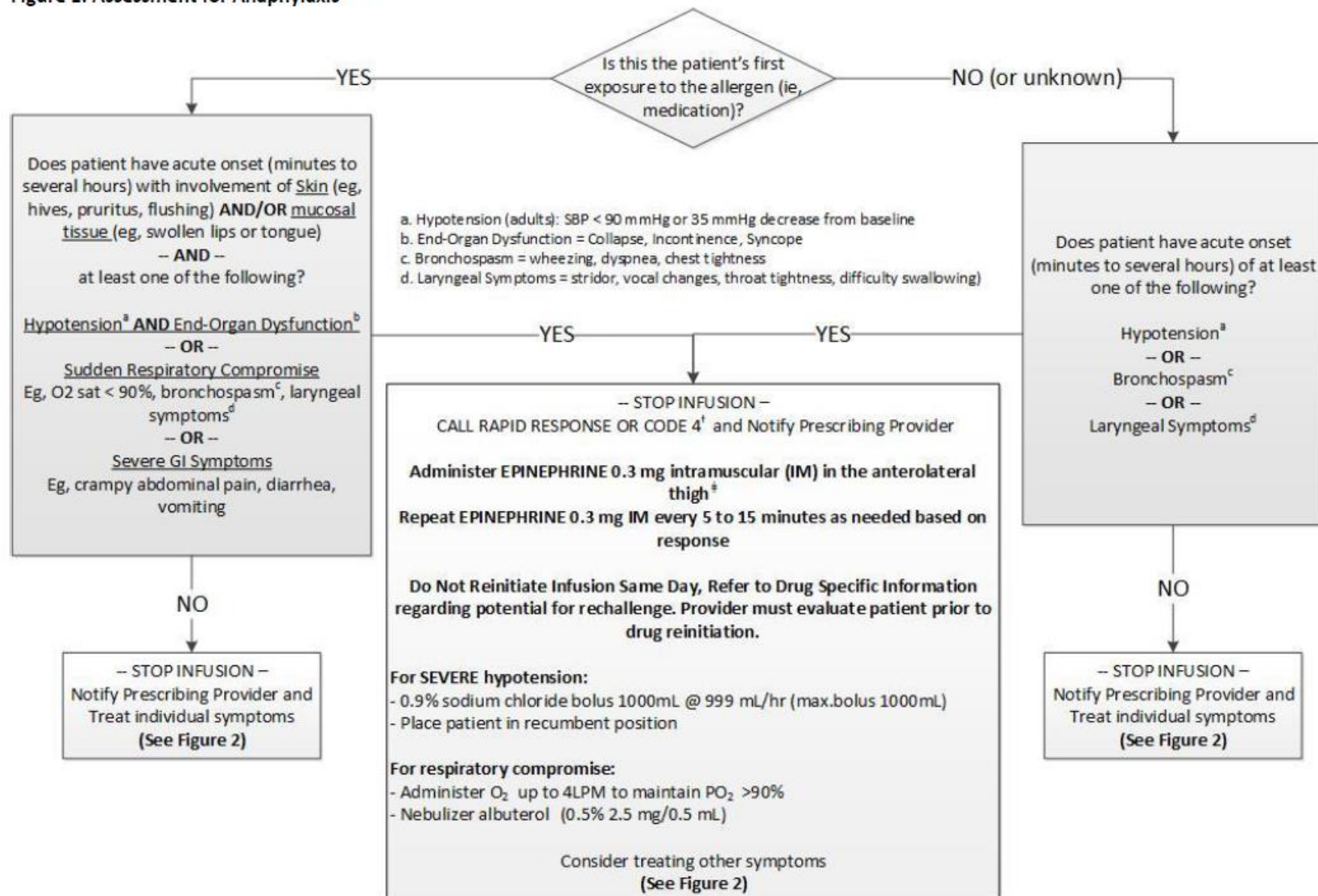
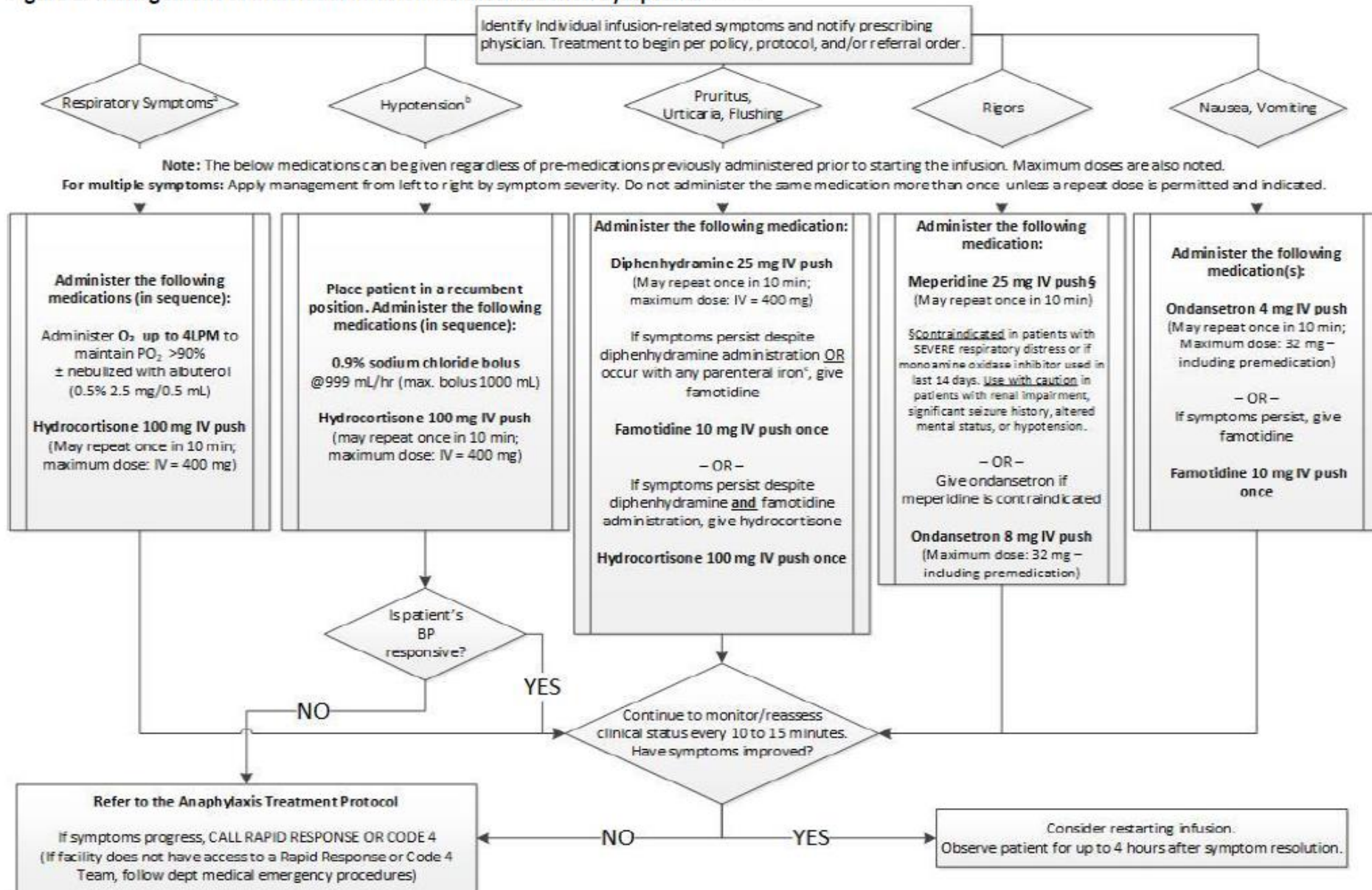


Figure 2. Management of Individual Infusion-Related Reaction Symptoms^{5-8,10-13}



a. Respiratory Symptoms = Bronchospasm (wheezing, dyspnea, chest tightness) OR Laryngeal Symptoms (stridor, vocal changes, throat tightness, difficulty swallowing) OR hypoxia (O₂ sat < 90%)

b. Hypotension (adults): SBP < 90 mmHg or 35 mmHg decrease from baseline

c. The incidence of reactions with newer parenteral iron formulations is relatively low. If a reaction occurs with any parenteral iron, it is most commonly a non-immune Fishbane response. Symptoms include isolated and mild transient flushing, myalgia, and arthralgia. Symptoms usually resolve upon stopping or slowing the infusion and do not require interventional medication. If an interventional medication is required, a H₂ receptor blocking antihistamine (ie, famotidine) may be preferred. Last Revised: 08/2024